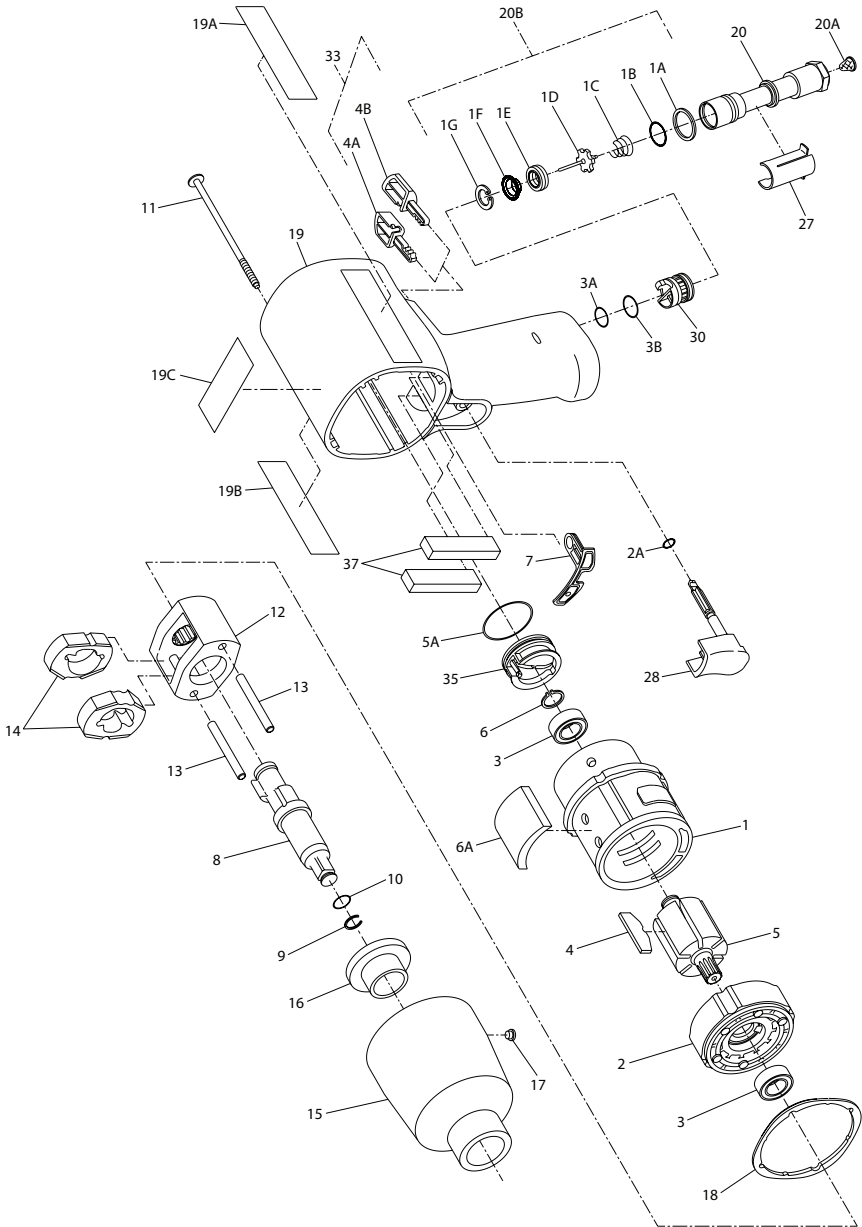


2131 Series, Air Impact Wrench - Exploded View



(Dwg. TPA1854)

2131 Series, Air Impact Wrench - Parts List

Item	Part Description	Part Number	Item	Part Description	Part Number		
1	Cylinder	2135-3	20	Inlet Bushing Assembly	2131-D565		
2	Front End Plate	2131-11	20A	Inlet Bushing Screen	5RA-61		
3	Rotor Bearing (2 required)	2131-97	20B	Inlet Parts Kit	2135-K303		
* 4	Vane Packet (set of 6 Vanes) (yellow)	2131-42A-6	1A	Washer	---		
5	Rotor	2131-53	1B	Inlet Bushing Seal	---		
6	Rear Rotor Bearing Retainer	2131-6	1C	Tilt Valve Spring	---		
6A	Silencer		1D	Tilt Valve	---		
	for 2131QT	2131QT-311	1E	Tilt Valve Seat	---		
	for 2131PSP, 2131C and 2131PEX	2131S-311	1F	Tilt Valve Seat Support	---		
* 7	Motor Gasket	2131-283	1G	Tilt Valve Seat Retainer	---		
8	Anvil Assembly (with Ring-Type Retainer for 2131QT and 2131C)	213B-A626	27	Inlet Retainer Clip	2131-57		
	* 9		Socket Retainer Ring	2135-425	2A	Trigger Assembly	2131-A93
			Socket Retainer O-Ring	R1A-159	30	Trigger O-Ring	---
* 10	Socket Retainer O-Ring	R1A-159	3A	Reverse Valve Assembly	2131-A329		
*	Anvil Assembly (with Pin-Type Retainer for 2131PSP and 2131PEX)	213B-A726	3B	Reverse Valve O-Ring (top)	---		
			3B	Reverse Valve O-Ring (bottom) (blue)	---		
			33	Button Kit	---		
*	Socket Retainer Plunger	804-716		for 2131QT	SN2131-K75		
*	Socket Retainer Spring	5UHD-718		for 2131PSP, 2131C and 2131PEX	2131-K75		
11	Hammer Case Screw (4 required)	2131-638	4A	Forward Button	---		
	Hammer Frame Assembly	2131-A703	4B	Reverse Button	---		
12	Hammer Frame	2131-703	35	Power Management Assembly	2131-A249		
13	Hammer Pin (2 required)	2131-704	5A	Power Management Dial Seal	---		
14	Hammer (2 required)	231XP-724	*	Inlet Clip Removal Tool	2131-322		
15	Hammer Case Assembly		37	Silencer (2 required)(for 2131PSP, 2131C and 2131PEX)	2131S-310		
	for 2131QT and 2131C	2131A-A727	*	ATEX Label (for 2131PSP)	ATEX-IMPACTOOL-99		
	for 2131PSP and 2131PEX	2131PSP-D727	*	Grease (1 lb) (for external lubrication of the impact mechanism)	115-1LB		
16	Hammer Case Bushing		*	Grease (for lubrication when disassembling and assembling the impact mechanism)			
	for 2131QT and 2131C	2131A-941		1 lb	105-1LB		
	for 2131PSP and 2131PEX	2131SP-941		8 lb	105-8LB		
17	Hammer Case Grease Fitting	D0F9-879					
* 18	Hammer Case Gasket	2131-36					
19	Housing Assembly		*	Protective Cover	2131-P32		
	for 2131C	2131C-A40	*	Grease Gun	R000A2-228		
	for 2131QT	2131QT-D40	*	Grip (for 2131QT)	2132G-747		
	for 2131PSP	2131PSP-A40					
	for 2131PEX	2131PEX-A40					
19A	Nameplate						
	for 2131QT	2131QT-301					
	for 2131PSP, 2131C and 2131PEX	2131PSP-301					
19B	Housing Label						
	for 2131C	2131C-300					
	for 2131QT	2131-300					
	for 2131PSP	2131PSP-300					
	for 2131PEX	2131PEX-300					
19C	Warning Label	WARNING-2-99					

* Indicates not illustrated.

• Indicates common-wear parts. Maintain stock to reduce downtime.

Parts and Maintenance

When tool life has expired, it is recommended that the tool be disassembled, degreased and parts separated by material for proper recycling.

Tool repair and maintenance should only be carried out by an authorized Service Center.

Refer all communications to the nearest **Ingersoll Rand** office or distributor.

Related Documentation

Manuals can be downloaded from ingersollrand.com

For additional information, refer to:

Product Safety Information Manual Form 04580916 and 47559151001 (ATEX)

Product Information Manual Form 04584686

Product Maintenance Manual Form 45481785



ingersollrand.com
© 2021 Ingersoll Rand

04584025
Edition 9
December 2021