

# Air Drill, Screwdriver and Angle Wrench



5L and 5RL

---

## Product Parts Information



Save These Instructions

When tool life has expired, it is recommended to:

- disassemble the tool
- degrease the tool
- separate tool parts by material for correct recycling

Tool repair and maintenance should be conducted by an authorized service center.

Refer all communications to the nearest **Ingersoll Rand** office or distributor.

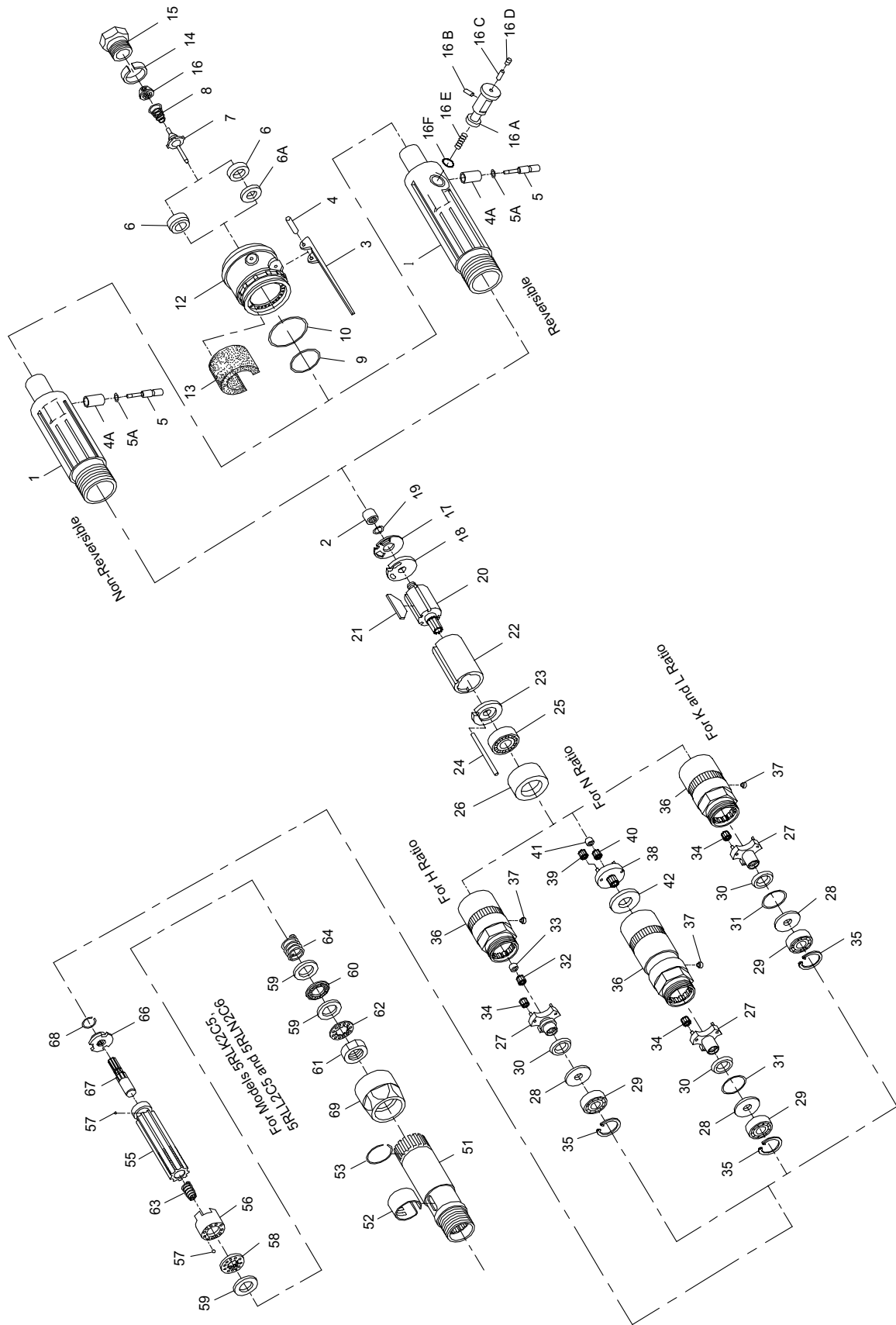
Manuals are available at [ingersollrand.com](http://ingersollrand.com)

**Table 1. Product Information Manuals**

<b>Publication</b>	<b>CCN</b>
Product Safety Information Manual	04580353 and 04585006
Product Information Manual	16572182, 80167471 and 80167489
Product Maintenance Information Manual	16572620
Declaration of Conformity	47759535001

# 5L and 5RL Air Drill, Screwdriver and Angle Wrench

Figure 1. Exploded View



## 5L and 5RL Air Drill, Screwdriver and Angle Wrench

**Table 2. 5L and 5RL Air Drill, Screwdriver and Angle Wrench - Parts List**

Item No.	Part Description	Part Number
	Motor Housing Assembly	
	for 90° Angle Drill models ending in -EU	5LK2C-EU-A40
	for all other 90° Angle Drill models	5LK2C-A40
	for 45° Angle Drill models ending in -EU	5L1B-EU-A40
	for all other 45° Angle Drill models	5L1B-A40
	for non-reversible Angle Wrench or Angle Screwdriver models ending in -EU	5LK2D-EU-A40
	for all other non-reversible Angle Wrench or Angle Screwdriver models	5LK2D-A40
	for reversible Angle Wrench or Angle Screwdriver models ending in -EU	5RLK2C-EU-A40
	for all other reversible Angle Wrench or Angle Screwdriver models	5RLK2C-A40
1	Motor Housing	
	for 5L1UB-EU-A40	5L1B-EU-B40
	for 5L1UB-A40	5L1B-B40
	for 5LK2C-EU-A40 or 5LK2D-EU-A40	5LK2C-EU-B40
	for 5LK2C-A40 or 5LK2D-A40	5LK2C-B40
	for 5RLK2C-EU-A40	5RLK2C-EU-B40
	for 5RLK2C-A40	5RLK2C-B40
(a) 2	Rear Rotor Bearing	
	for non-reversible models	5LK2C-24
	for reversible models	5R-24
(b)	Warning Label	
	for models ending in -EU	EU-99
	for all other models	WARNING-7-99
3	Throttle Lever	7L-273
4	Throttle Lever Pin	7L-120
4A	Throttle Plunger Bushing	
	for 45° Angle Drills and all other non-reversible models	7L-91
	for reversible models	5RLK2C-91
5	Throttle Plunger Seal	
	for non-reversible models	6LL-259
	for reversible models	8SL-259
(a) 6	Throttle Valve Seat	
	for Angle Drills	7AH-303
	for Angle Wrenches/Angle Screwdrivers	7RAK-303
6A	Throttle Valve Seat Support	
	for Angle Wrenches/Angle Screwdrivers	7RAK-304
(a) 7	Throttle Valve	
	for Angle Drills	7AH-302
	for Angle Wrenches/Angle Screwdrivers	7RAK-302
(a) 8	Throttle Valve Spring	7L-51
(a) 9	Silencer Seal Ring	WWV100A1-43
(a) (c) 10	Spindle Bearing Seal	6AH-103
(a) 12	Rear Muffler Assembly	6WS-A23

## 5L and 5RL Air Drill, Screwdriver and Angle Wrench

**Table 2. 5L and 5RL Air Drill, Screwdriver and Angle Wrench - Parts List (continued)**

Item No.	Part Description	Part Number
13	Muffler Element	3RA-310
14	Inlet Bushing Spacer	7AH-65
15	Inlet Bushing	7L-565
(a) 16	Air Strainer Screen	ROA2-61
16A	Reverse Valve (for reversible models only)	55RP-329
16B	Reverse Valve Lock Pin (for reversible models only)	SPA102R-668
16C	Lock Pin Retainer (for reversible models only)	7RL-56
16D	Retainer Setscrew (for reversible models only)	7RL-669
16E	Reverse Valve Spring (for reversible models only)	55RP-515
16F	Reverse Valve Bushing Seal (for reversible models only)	6WRS-290
(a) (c) 17	Rear End Plate Gasket	5RLK-739
18	Rear End Plate	5RLK-12
(a) 19	End Plate Retainer	5RLK-118
20	Rotor	
	for K ratio (8 teeth)	5RLK-53
	for H, L or N ratio (6 teeth)	5RLL-53
(a) 21	Vane Packet	R1401-42-5
22	Cylinder	
	for non-reversible models	5LK-3
	for reversible models	5RLK-3
23	Front End Plate	106-11
24	Cylinder Dowel	106-98
(a) (c) 25	Front Rotor Bearing	WWA100-97
26	Front Rotor Bearing Support	106-13
	Spindle Assembly	
	for H ratio	5LH2A-A8
	for K or L ratio	5LK2C-A8
	for N ratio	5LN2C-A8
27	Spindle	
	for H ratio (marked H)	5LH2A-8
	for K or L ratio (marked K)	5LK2C-8
	for N ratio (marked N)	5LN2C-8
28	Grease Shield	5R-701
29	Spindle Bearing	R1L-24
30	Seal Support	5RAK-5
(a) (c) 31	Seal (for N ratio only)	182A53-610
32	Rotor Pinion (for H ratio) (15 teeth)	5RAN-17
33	Rotor Pinion Spacer (for H ratio)	5RAN-18

## 5L and 5RL Air Drill, Screwdriver and Angle Wrench

**Table 2. 5L and 5RL Air Drill, Screwdriver and Angle Wrench - Parts List (continued)**

Item No.	Part Description	Part Number
(c) 34	Spindle Planet Gear (QTY. 3)	
	for H ratio (13 teeth)	5RAN-9
	for K ratio (15 teeth)	5RAK-10A
	for L ratio (17 teeth)	5RAL-10B
	for N ratio (14 teeth)	5RAN-10A
35	Spindle Bearing Retainer	7L-28
36	Gear Case Assembly	
	for H or L ratio	5LL2C-A37
	for K ratio	5LK2C-A37
	for N ratio	5LN2C-A37
37	Grease Fitting	D0F9-879
38	Gear Head Assembly (for N ratio)	5RAN-A216
(c) 39	Gear Head Planet Gear (13 teeth) for N ratio) (QTY. 3)	5RAN-9
(c) 40	Rotor Pinion (for N ratio) (15 teeth)	5RAN-17
(c) 41	Rotor Pinion Spacer (for N ratio)	5RAN-18
42	Gear Head Spacer (for N ratio)	5R-80
	Cushion Clutch Attachment	
	with Light Clutch Spring	5LK2C-AL580
	with Heavy Clutch Spring	5LN2C-AH580
51	Clutch Housing Assembly	5LK2C-B580
52	Adjusting Hole Cover	5C1-415
53	Coupling Nut Retainer	5C1-29
	Clutch Shaft Assembly	
	for Light Clutch Spring	5LK2C-AL586
	for Heavy Clutch Spring	5LN2C-AH586
55	Clutch Shaft	5LK2C-586
(c) 56	Front Clutch Jaw	5C1-589A
(c) 57	Clutch Ball (QTY. 24)	RX1-629
(c) 58	Clutch Ball Spacer	5C1-401A
(c) 59	Clutch Spring Seat (QTY. 3)	5C1-627
(c) 60	Spring Seat Bearing	5C1-105
61	Clutch Adjusting Nut	5C1-582A
62	Adjusting Nut Lock	5C1-588
63	Clutch Engaging Spring	5LK2C-626
64	Clutch Spring	
	Light (Black)	5C1-L583
	Heavy (Green)	5C1-H583
	Clutch Driver Assembly	5LK2C-A581
(c) 66	Clutch Driver	5LK2C-581
67	Clutch Shaft Support	5LK2C-584
(c) 68	Clutch Driver Retainer	7AH-118

## 5L and 5RL Air Drill, Screwdriver and Angle Wrench

**Table 2. 5L and 5RL Air Drill, Screwdriver and Angle Wrench - Parts List (continued)**

Item No.	Part Description	Part Number
69	Coupling Nut	7L-27
(b)	Clutch Sprag Key	5C1-416
(b)	Suspension Bail	7L-365
(b)	Grease Gun	R000A2-228
(b)	Housing Cap Wrench	141A12-26
(b)	Thread Retaining Compound	141A12-226
(b)	Locking Type Throttle Lever Assembly	
	for Model 5LH1A1 and 5LH1A4	5LH1A1-A400
	for Model 5LH1B1	5LH1B1-A400
	for Model 5LK1A1	5LK1A1-A400
	for Model 5LK1B1 and 5LK1B4	5LK1B1-A400
	for Model 5LL1A1	5LL1A1-A400
(b)	Piped-Away Exhaust Kit	7L-K284
(b)	Vibra-Tite®+ (30.0 cc)	5R-VT30
(b)	Tune-up Kit (for Angle Drills) (includes illustrated parts 2, 6, 7, 8, 9, 10, 12, 16, 17, 19, 21, 25 and 31)	5L-NS-TK1
(b)	Tune-up Kit (for Angle Wrenches/Angle Screwdrivers) (includes illustrated parts 2, 6, 7, 8, 9, 10, 12, 16, 17, 19, 21, 25 and 31)	5RL-NS-TK1
(b)	Horizontal Hanger	6WS-366
(b)	Retainer	500B-815AX

(a) Indicates tune-up kit part.

(b) Indicates not illustrated.

(c) Indicates common-wear parts. Maintain stock to reduce downtime.





## 5L and 5RL Air Drill, Screwdriver and Angle Wrench

**Table 3. 5L and 5RL Air Drill, Screwdriver and Angle Wrench - Parts List**

Item	Part Description	7L1A1	7L1A3	7L1A4	7L1B1	7L1B4	7L2A4
101	Angle Drill Attachment	7L1A1	7L1A1	7L1A	7L1B	7L1B4	7L2A4
	Angle Housing Assembly	7L1A-B550	7L1A-B550	7L1A-B550	7L1B-A550	7L1B-B550	7L2A-B550
102	Grease Fitting	D0F9-879	D0F9-879	D0F9-879	D0F9-879	D0F9-879	D0F9-879
(a) 104	Spindle Upper Bearing	—	—	—	—	—	120A4-603
105	Spindle Upper Bearing	7L1A-603	7L1A-603	7L1A-603	7L1B-A97	7L1B-A97	—
(a) 106	Upper Bearing Shim Packet (two thicknesses of shims)	7L1A-P448	7L1A-P448	7L1A-P448	—	—	—
(a) 107	Spindle Gear Set (includes bevel pinion and spindle gear)						
	1/4"-28 female thread	7L1A1-A591	—	—	7L1B1-A591	—	—
	9/32"-40 female thread	—	—	7L1A4-A591	—	7L1B4-A591	—
	5/16"-24 female thread	—	7L1A3-A591	—	—	—	—
(a) 108	Matched Bevel Gear Set (includes bevel gear and bevel pinion)	—	—	—	—	—	141A12-A552
108A	Spindle (3/8"-24 male thread)	—	—	—	—	—	7L2A4-791
(a) 109	Bevel Pinion Bearing	7AH-24	7AH-24	7AH-24	7L1B-593	7L1B-593	H54U-511B
110	Bearing Seat Retainer	W22-6	W22-6	W22-6	W22-6	W22-6	1415A12-6
111	Rear Thrust Bearing Seat	7L2A-682	7L2A-682	7L2A-682	7L2A-682	7L2A-682	7L2A-682
112	Bevel Pinion Thrust Bearing	3RL2-105	3RL2-105	3RL2-105	3RL2-105	3RL2-105	161A32-105
113	Front Thrust Bearing Seat	7L1A-683	7L1A-683	7L1A-683	7L1A-683	7L1A-683	141A12-683
114	Pinion Bearing Spacer Retainer	—	—	—	—	—	RXA21-343
116	Bevel Pinion Bearing Spacer	—	—	—	—	—	7L2A-165
(a) 119	Lower Spindle Bearing	7L1A-593	7L1A-593	7L1A-593	7L1B-593	7L1B-593	120A4-593
119A	Lower Spindle Bearing Retainer	—	—	—	7L1B-28	7L1B-28	—
120	Bevel Gear Retainer	—	—	—	—	—	120A4-578
121	Spindle Bearing Cap	7L1A-531	7L1A-531	7L1A-531	—	—	7L2A4-531
123	Coupling Nut Retainer	5C1-29	5C1-29	5C1-29	5C1-29	5C1-29	5C1-29
124	Coupling Nut	7L-27	7L-27	7L-27	7L-27	7L-27	7L-27
(b)	Drill Chuck						
(b)	0 to 1/4" capacity	—	—	—	—	—	R0H-99
	0 to 3/8" capacity	—	—	—	—	—	R1M-99
	Drill Chuck Key						
	for R0H-99	—	—	—	—	—	R1H-J253
	for R1M-99	—	—	—	—	—	R1M-J253
(b)	Bearing Inserting Tool	7L1A-950	7L1A-950	7L1A-950	7L1B1-955	7L1B1-955	7L2A-950
(b)	Bevel Pinion Sprag Key	5C1-416	5C1-416	5C1-416	5C1-416	5C1-416	—

(a) Indicates common-wear parts. Maintain stock to reduce downtime.

(b) Indicates not illustrated.

## 5L and 5RL Air Drill, Screwdriver and Angle Wrench

**Table 4. 5L and 5RL Air Drill, Screwdriver and Angle Wrench - Parts List**

Item	Part Description	5L2C3	5L2C5 or 5L2C6	5L2D5	6L2C6
	Angle Wrench/Angle Screwdriver Attachment				
	1/4" hex recess (for standard bits)	5L2C3	—	—	—
	1/4" square drive	—	5L2C5	5L2D5	—
	3/8" square driver	—	5L2C6	—	6L2D6
201	Angle Housing Assembly	5L2C-A550	5L2C-A550	7L2A-B550	6L2D-B550
202	Grease Fitting	D0F9-879	D0F-879	D0F-879	D0F-879
(a) 203	Upper Spindle Bearing	120A4-603	120A4-603	120A4-603	120A4-603
(a) 204	Matched Bevel Gear Set	141A12-A552	141A12-A552	141A12-A552	6L2D-A552
(a) 205	Bevel Pinion Bearing	H54U-511B	H54U-511B	H54U-511B	H54U-511B
206	Rear Thrust Bearing Seat	—	—	7L2A-682	7L2A-682
207	Bearing Seat Retainer	—	—	1415A12-6	1415A12-6
208	Front Thrust Bearing Seat	—	—	141A12-683	141A12-683
209	Pinion Bearing Spacer	AGS141-165	AGS141-165	7L2A-165	7L2A-165
(a) 210	Bearing Spacer Retainer	RXA21-343	RXA21-343	RXA21-343	RXA21-343
211	Bevel Pinion Thrust Bearing	120A4-97	120A4-97	161A32-105	161A32-105
(a) 212	Bearing Retainer	120A4-588	120A4-588	—	—
(a) 213	Lower Spindle Bearing	120A4-593	120A4-593	120A4-593	6L2D-59
(a) 214	Bevel Gear Retainer	120A4-578	120A4-578	120A4-578	120A4-578
215	Coupling Nut Retainer	141A12-29	141A12-29	5C1-29	5C1-29
216	Coupling Nut	141A12-27	141A12-27	7L-27	7L-27
217	Socket Adapter Spindle				
	1/4" square drive	—	141A9-A607-1/4	141A9-A607-1/4	—
	3/8" square drive	—	141A12-A607	—	6L2D-A607
(b)	Socket Retainer (for 1/4" pin type square drive)	—	500B-816A	500-816A	—
(b)	Socket Retaining Pin (for 3/8" square drive)	—	5020-716	—	5020-716
(b)	Socket Retaining Spring (for 3/8" square drive)	—	401-718	—	401-718
218	1/4" Hex Bit Holder Spindle (for standard bits)	5L2C3-B586	—	—	—
219	Bit Retaining Ball (for No.5L2C3-B586 Spindle)	AV1-255	—	—	—
220	Bit Retaining Spring (for No.5L2C3-B586 Spindle)	102A60-241	—	—	—
221	Angle Housing Cap	120A4-531	120A4-531	120A4-531	6L2D-531
221A	Spindle Seal	—	—	—	6L2D-720
(b)	Socket Retainer (for 1/4" ball-type square drive)	—	500B-815AX	500B-815AX	—

(a) Indicates common-wear parts. Maintain stock to reduce downtime.

(b) Indicates not illustrated.

## 5L and 5RL Air Drill, Screwdriver and Angle Wrench

**Table 5. 5L and 5RL Air Drill, Screwdriver and Angle Wrench - Parts List**

Item	Part Description	Part Number
217	Spindle	
	1/4" square drive	141A9-A607-1/4
	3/8" square drive (for 5L2C5 or 5L2C6)	141A12-A607
	3/8" square drive (for 6L2D6)	6L2D-A607
218	1/4" hex recess (for standard bits)	5L2C3-B586
(a)	1/4" hex recess (for insert bits)	5L2C4-B386
(a)	Bit Retainer (for No.5L2C4-B386 Spindle)	5L2C4-425
219	Bit Retaining Ball (for No. 5L2C3-B586)	AV1-255
220	Bit Retaining Spring (for No. 5L2C3-B586)	102A60-241
(a)	Socket Retainer (for No.141A9-A607-1/4 Spindle)	500B-816A
(a)	Socket Retaining Spring (for 141A12-A607 Spindle or 6L2D-A607 Spindle)	401-718
(a)	Socket Retainer Pin (for 141A12-A607 Spindle or 6L2D-A607 Spindle)	5020-716

(a) Indicates not illustrated.

