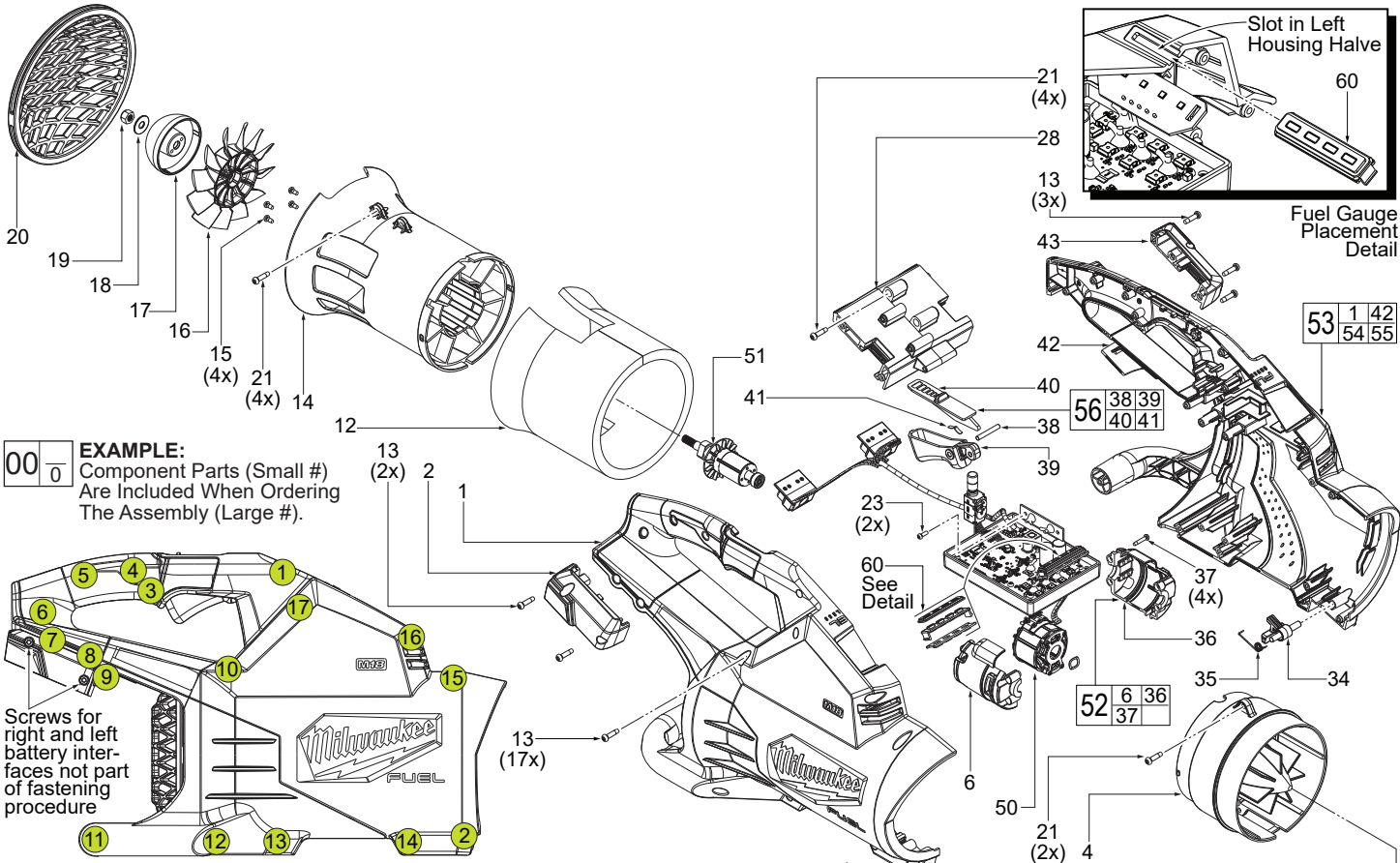




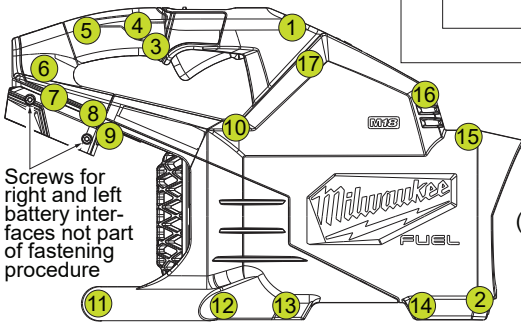
SERVICE PARTS LIST

BULLETIN NO.
54-05-2710

SPECIFY CATALOG NO. AND SERIAL NO. WHEN ORDERING PARTS		REVISED BULLETIN	DATE
M18 FUEL™ DUAL BATTERY BLOWER			Aug. 2022
CATALOG NO. 2824-20	STARTING SERIAL NO. N18A	WIRING INSTRUCTION See Page 2	



EXAMPLE:
Component Parts (Small #) Are Included When Ordering The Assembly (Large #).



Screw fastening procedure (Torque to 11-13 kgf.cm, 9.5-11.2 in.lb)

FIG.	PART NO.	DESCRIPTION OF PART	NO. REQ.
1		Right Housing Halve - Cover	(1)
2	31-06-0037	Right Battery Interface	(1)
3	43-24-0012	Nozzle (Exhaust Tube)	(1)
4	43-72-0034	Outlet Cone Section	(1)
6		Right Motor Insulator Halve	(1)
12	58-10-1853	Foam Insert	(1)
13	05-74-0253	M4 x 16mm Pan Hd. PT T-20 Screw	(2)
14	43-72-0087	Blower Inlet Duct	(1)
15	05-74-0252	M3 x 8mm Pan Hd. PT T-10 Screw	(4)
16	22-84-0026	Fan	(1)
17	42-92-0001	Fan Dome	(1)
18	45-88-0161	Flat Washer	(1)
19	05-55-0033	Lock Nut	(1)
20	31-15-0193	Inlet Vent	(1)
21	05-74-0251	M4 x 16mm Pan Hd. Delta T-20 Screw	(8)
23	05-81-1195	M3 x 8mm Pan Hd. ST T-10 Screw	(2)
28	31-06-0038	Middle Battery Interface	(1)
29	31-12-0122	Flared Nozzle Attachment	(1)
31	31-12-0121	Tapered Nozzle Attachment	(1)
34	44-20-0077	Nozzle Lock	(1)
35	40-50-0064	Nozzle Lock Spring	(1)
36		Left Motor Insulator Halve	(1)
37	05-81-0277	M3 x 16mm Pan Hd. ST T-10 Screw	(4)
38	06-65-0061	Trigger Pin	(1)
39	23-66-0319	Trigger	(1)
40	14-20-0406	Speed Control Slide	(1)
41	40-50-0027	Spring Plate	(1)
42		Left Housing Halve - Support	(1)
43	31-06-0039	Left Battery Interface	(1)
50	14-20-0368	Electronic Assembly	(1)
51	16-01-1038	Rotor Assembly	(1)
52	31-50-0262	Motor Insulator Service Kit	(1)
53	14-38-0178	Housing Service Kit	(1)
54	12-20-0491	Service Nameplate (Not Shown)	(1)
55	10-20-9811	Caution Label (Not Shown)	(1)
56	23-66-0321	Trigger Service Kit	(1)
60	44-06-0202	Fuel Gauge Lens/Bezel Service Kit	(1)

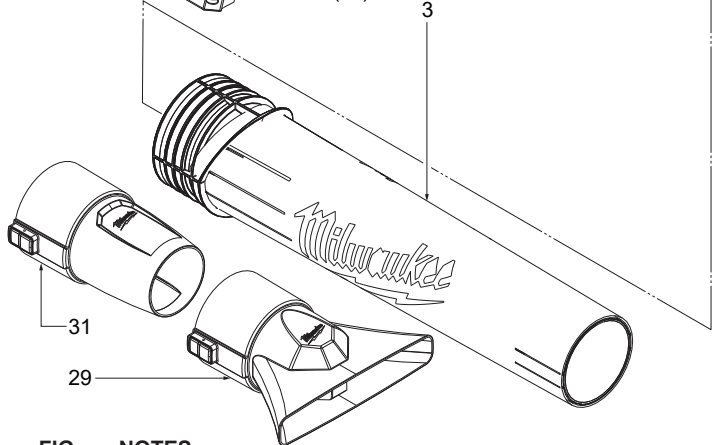


FIG. 54,55 NOTES
A clean, dry surface is essential for proper performance for any adhesive system. The area intended for application of any adhesive label or nameplate must be prepared by cleaning with isopropyl alcohol. The solvent is to be applied with a clean, lint free applicator and the surface allowed to dry before applying any label or nameplate.

SCREW TORQUE SPECIFICATIONS				
FIG.	PART NO.	WHERE USED	SEAT TORQUE	
			(KG/CM)	(IN/LBS)
13	05-74-0253	Hsg. Halves, Interfaces	11-13	9.5-11.2
15	05-74-0252	Inlet Duct	6-8	5.2-6.9
19	05-55-0033	Fan Dome, Fan	17-20	14.7-17.3
21	05-74-0251	Inlet Duct, Outlet Cone	13-15	11.2-13.0
23	05-81-1195	Fuse Trace Board	5-7	4.3-6.0
37	05-81-0277	Motor Insulator Halve	6-8	5.2-6.9

As an aid to reassembly, take notice of wire routing and position in wire guides and traps while dismantling tool.

Be sure that all components of the electronics kit are seated firmly and squarely in the housing recesses.

Avoid pinched wires, be sure that all wires and sleeves are pressed completely down in wire guides and traps.

Prior to securing the housing cover onto the housing support, be sure that there are no interferences.

Before installing the battery, check for proper functionality of on-off switch trigger and lock-off shuttle.

Install batteries and depress on-off switch trigger to assure tool is operating properly.

