



SERVICE PARTS LIST

BULLETIN NO.
54-22-2710

SPECIFY CATALOG NO. AND SERIAL NO. WHEN ORDERING PARTS			REVISED BULLETIN	DATE
M18 FUEL™ Braking Die Grinder, Slide Switch				Dec. 2022
CATALOG NO.	2939-20	STARTING SERIAL NO.	WIRING INSTRUCTION	
		N43A	SEE PAGE 2	

EXAMPLE:
Component Parts (Small #) Are Included
When Ordering The Assembly (Large #).

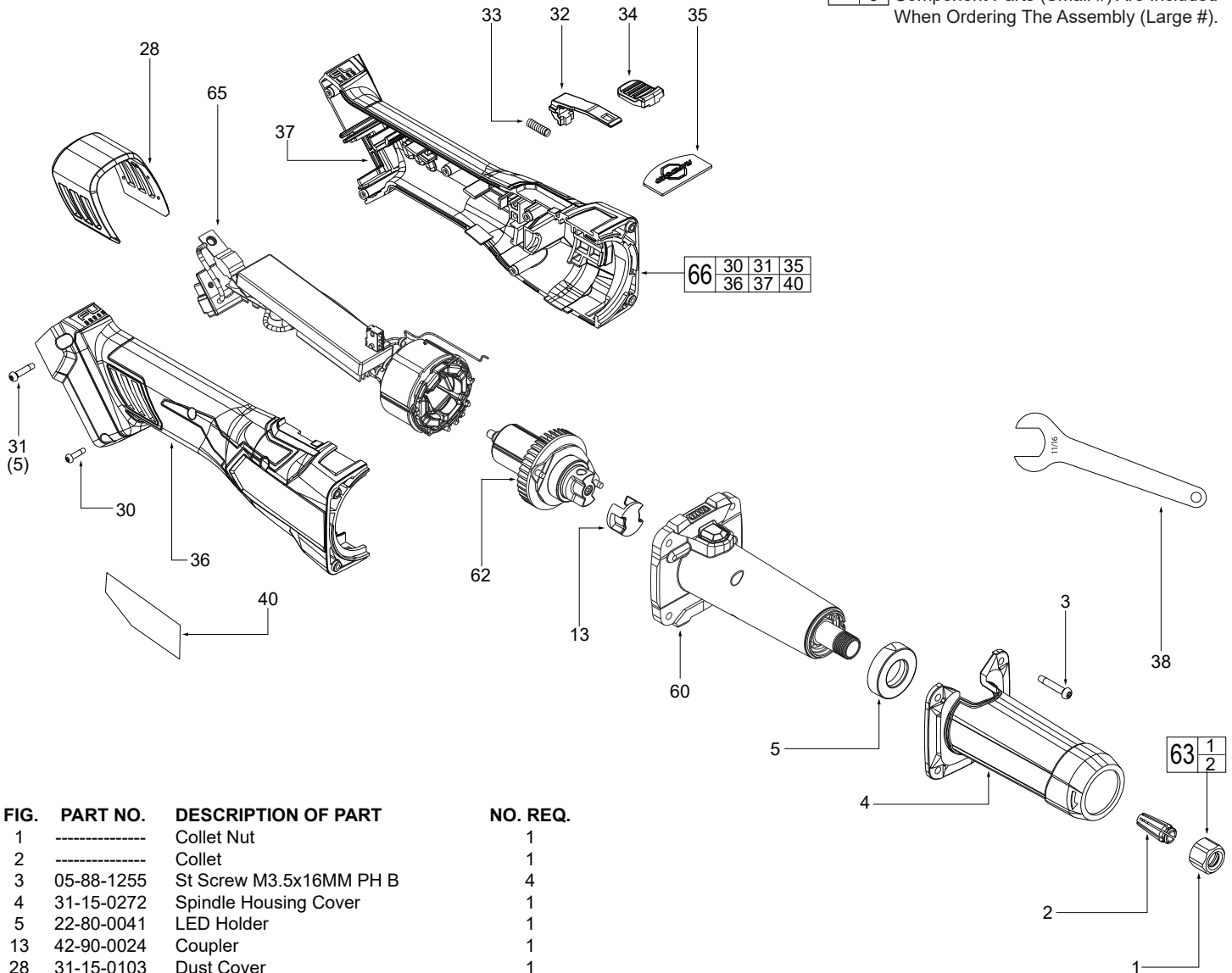


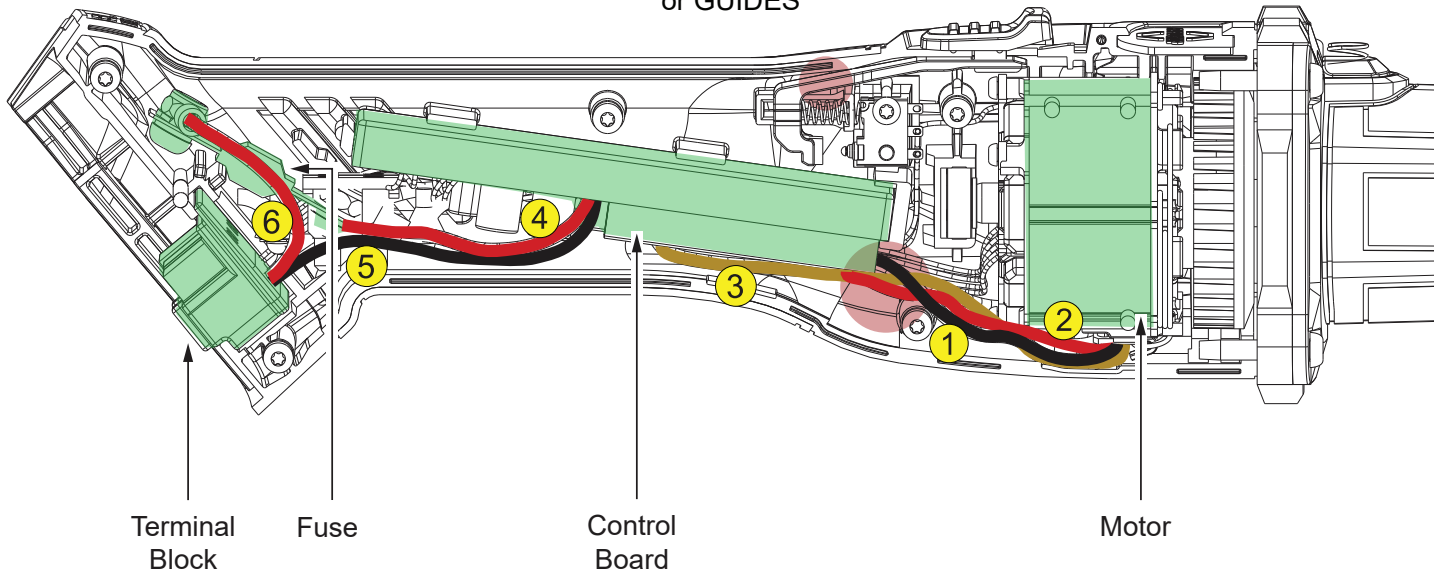
FIG.	PART NO.	DESCRIPTION OF PART	NO. REQ.
1	-----	Collet Nut	1
2	-----	Collet	1
3	05-88-1255	St Screw M3.5x16MM PH B	4
4	31-15-0272	Spindle Housing Cover	1
5	22-80-0041	LED Holder	1
13	42-90-0024	Coupler	1
28	31-15-0103	Dust Cover	1
36	-----	St Screw M2.6x0.907 FH Phillips	2
30	06-82-1087	St Screw M3.0x1.058 PH Torx T10 B	1
31	06-82-2025	St Screw M3.5x16MM PH B Torx	5
32	31-92-0286	Slide Pole	1
33	40-50-0243	Spring	1
34	42-42-0147	Lock-On Button	1
35	43-84-0207	Rapid Stop Plate	1
36	-----	Handle Housing Cover	1
37	-----	Handle Housing Support	1
38	49-96-4090	11/16" Open End Wrench	1
39	44-68-0027	Rubber Plug	1
40	12-20-0587	Service Nameplate	1
60	28-50-0113	Spindle Housing Assembly	1
62	16-01-0071	Rotor Assembly	1
63	44-40-0091	Collet Nut Assembly	1
65	14-20-0400	Electronic Assembly	1
66	14-38-0326	Housing Kit	1

SCREW TORQUE SPECIFICATIONS				
FIG.	PART NO.	WHERE USED	SEAT TORQUE	
			(kgf-cm)	(lb-in)
3	-----	St Screw M3.5x16MM	16-20	6.1-17.3
19	-----	Taptite Screw M3.5x0.6 T10S	15-18	13-15.6
25	-----	Taptite Screw M2.3x0.907 T8	5-6	4.3-5.2
36	-----	Taptite Screw M2.6x0.907 Phillips	4-5	3.4-4.3
40	-----	Taptite Screw M3.0x1.058 T10	3.5-4.5	3-3.9
41	-----	Taptite Screw M3.5x16MM T10	12.5-15.5	10.8-4.3

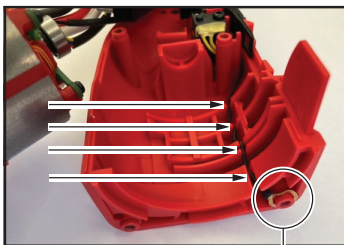
SERVICE WIRING

For the sake of clarity, the white wire is represented in gold color in the diagram.

● = WIRE TRAPS or GUIDES



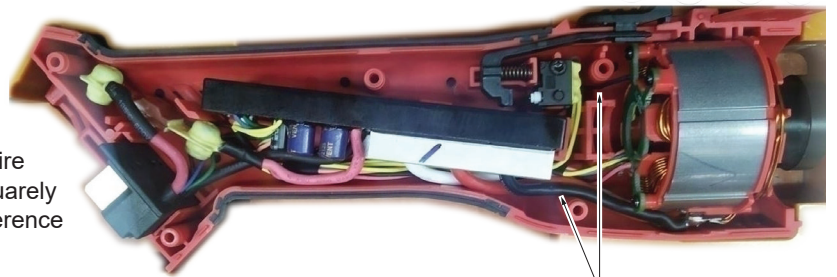
WIRING SPECIFICATIONS			
Wire No.	Wire Color	Length	Terminals, Connectors and 1 or 2 End Wire Preparation
1	Black	74 +4/-0	Connect with Motor and Control Board
2	Red	89 +4/-0	Connect with Motor and Control Board
3	White	104 +4/-0	Connect with Motor and Control Board
4	Red	55 +4/-0	Connect with Fuse and Control Board
5	Black	70 +4/-0	Connect with Terminal Block and Control Board
6	Red	40 +4/-0	Connect with Terminal Block and Fuse



Ground Terminal

Prior to installing the electronics assembly (65) into the housing support (37), place grounding terminal over screw boss as shown. Route ground wire, removing as much slack as possible. Be sure wire is pressed firmly to the back of the wire traps.

Install the electronics assembly as shown. Route wires around screw bosses and into wire traps. Be sure all components are seated squarely and firmly in place. Be sure there is no interference when installing the housing cover (36).



Wire Traps