



16606055
Edition 3
November 2021

Air Drill

7A Series

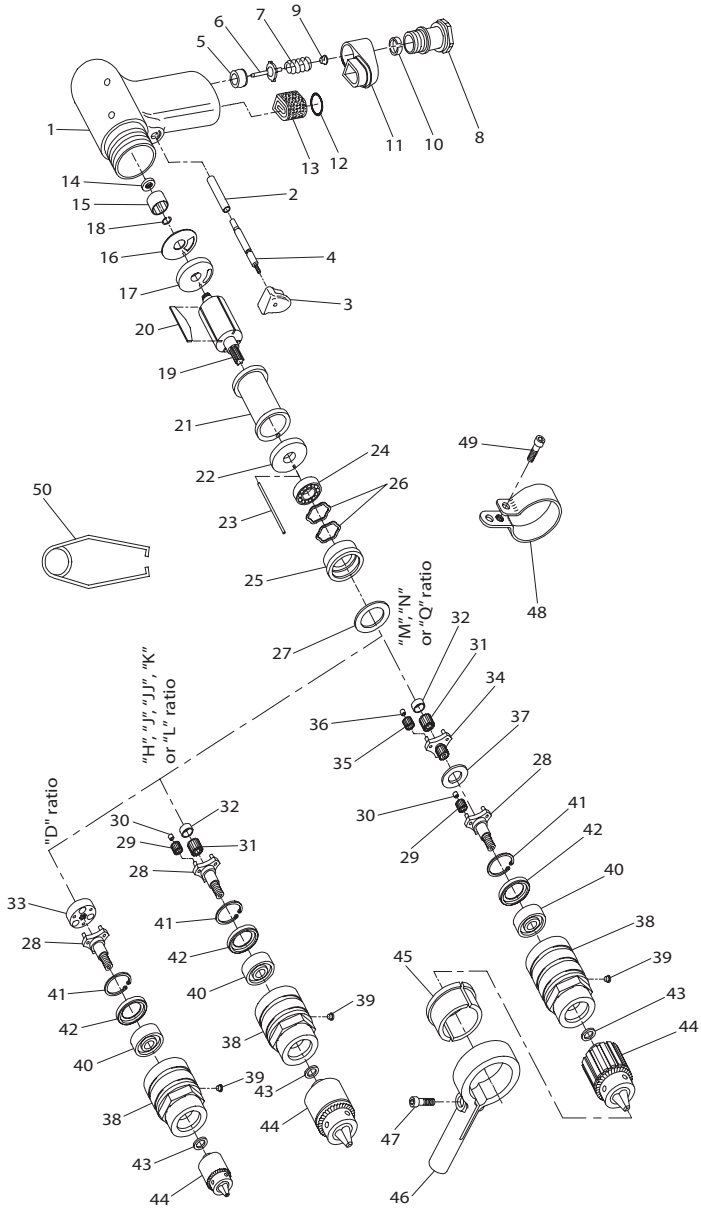
Parts Information



Save These Instructions

IR Ingersoll Rand®

7A Series, Air Drill - Exploded View



(Dwg. TPA1365-1)

7A Series, Air Drill - Parts List

Item	Part Description	Part Number	Item	Part Description	Part Number
	Motor Housing Assembly		32	Rotor Pinion Spacer	
	for models ending in EU	7AH-EU-AST40A		for H, J, M or N ratio	7AH-18
	for all other models	7AH-AST40A		for JJ ratio	7AJJ-18
1	Motor Housing		33	Drive Plate (for D ratio)	7AD-171
	for models ending in EU	7AH-EU-BST40A	34	Gear Head	
	for all other models	7AH-BST40A		for M ratio (16 teeth)	7AM-216
*	Warning Label			for N ratio (10 teeth)	7AN-216
	for models ending in EU	EU-99		for Q ratio (13 teeth)	7AQ-216
	for all other models	WARNING-7-99	35	Gear Head Planet Gear Assembly (3)	
2	Trigger Bushing	4RA-91		for M or N ratio (15 teeth)	7AH-A10
	Trigger Assembly	7AH-A93		for Q ratio (21 teeth)	7AP-A10
3	Trigger	5RA-93	36	Gear Head Planet Gear Bearing (1 for each Gear) (for M, N or Q ratio)	7AH-500
4	Trigger Pin	7AH-94	37	Gear Head Spacer (for M, N or Q ratio)	7AN-80
♦ 5	Throttle Valve Seat	7AH-303		Gear Case Assembly	
♦ 6	Throttle Valve	7AH-302		for D, H, J, JJ, K or L ratio models ending in ST4 or ST6	7AH-A37A
♦ 7	Throttle Valve Spring	7AH-51		for D, H, J, JJ, K or L ratio models ending in EU	7AH-EU-A37A
8	Inlet Bushing Assembly	7AH-A565		for M, N or Q ratio models ending in ST6 or ST8	7AN-A37A
♦ ♦ 9	Air Strainer Screen	R0A2-61		for M, N or Q ratio models ending in EU	7AN-EU-A37A
10	Inlet Bushing Spacer	7AH-65			
11	Muffler Assembly	3RA-A123			
♦ 12	Muffler O-ring	85H-167			
♦ 13	Muffler Element	7RA-311			
♦ 14	Rear Rotor Bearing Nut	7AH-105A			
♦ 15	Rear Rotor Bearing	7AH-24	38	Gear Case	
♦ ♦ 16	Rear End Plate Gasket	7AH-739		for D, H, J, JJ, K or L ratio models ending in ST4 or ST6	7AH-B37A
17	Rear End Plate	7AH-12		for D, H, J, JJ, K or L ratio models ending in EU	7AH-EU-B37A
♦ ♦ 18	Rear End plate Retainer	7AH-118		for M, N or Q ratio models ending in ST6 or ST8	7AN-B37A
19	Rotor			for M, N or Q ratio models ending in EU	7AN-EU-B37A
	for D, H, J, L, M or N ratio (7 teeth)	7AH-53			
	for JJ ratio (6 teeth)	7AJJ-53			
	for K or Q ratio (10 teeth)	7AK-53			
♦ 20	Vane Packet (set of 4 Vanes)	7AH-42A-4			
21	Cylinder	7AH-3A	39	Grease Fitting	D0F9-879
22	Front End Plate	7AH-11	40	Spindle Bearing	5A-510
23	Cylinder Dowel	7AH-98	41	Spindle Bearing Retainer	7AH-28
♦ 24	Front Rotor Bearing	R1-22	42	Grease Shield	7AH-701
25	Front Rotor Bearing Housing	7AH-13	43	Drill Chuck Spacer	5A-90
26	Bearing Spring Washer (2)	7AH-278	44	Drill Chuck	
27	Bearing Housing Spacer	7AH-81		for D, H, J or JJ ratio (0 to 1/4" [0 to 6 mm] capacity)	R00A-99
28	Spindle			for K, L or M ratio (0 to 3/8" [0 to 10 mm] capacity)	6A-99
	for D or J ratio	7AJ-8A		for N or Q ratio (5/64" to 1/2" [2 to 13 mm] capacity)	R0K-99
	for H ratio	7AH-8			
	for JJ or Q ratio	7AQ-8A	*	Chuck Key	
	for K or N ratio	7AK-8		for R00A-99 chuck	R00A-J253
	for L ratio	7AL-8		for 6A-99 chuck	R0J-J253
	for M ratio	7AM-8A		for R0K-99 chuck	R1T-J253
29	Spindle Planet Gear Assembly (3)				
	for H ratio (15 teeth)	7AH-A10			
	for J or M ratio (18 teeth)	7AJ-A10	*	Dead Handle Label (for 7ANST8 and 7AQST8)	7AQ-245
	for JJ or Q ratio (19 teeth)	7AQ-A10	45	Dead Handle Adapter (2)	7A-49
	for K or N ratio (21 teeth)	7AK-A10	46	Dead Handle Assembly	R1A-A48
	for L ratio (22 teeth)	7AL-A10	47	Pinch Bolt	510-638
30	Spindle Planet Gear Bearing (1 for each Gear)		48	Horizontal Hanger Assembly	7RA-A366
	for H ratio	7AH-500	49	Horizontal Hanger	7RA-366
	for J, JJ, M or Q ratio	7AJ-500	49	Hanger Screw	AL-638
	for K, L or N ratio	7AK-500	50	Vertical Hanger	7L-365
31	Rotor Pinion		*	Chuck Shield Kit (for D, H, J, JJ or K ratio)	7AH-K309
	for H, M or N ratio (22 teeth)	7AH-17	*	Warning Label (for N or Q ratio)	7AO-245
	for J ratio (16 teeth)	7AJ-17	*	Tune-up Kit (includes illustrated items 5, 6, 7, 9, 12, 13, 15, 16, 18, 20 and 24)	7A-DRILLS-TK1
	for JJ ratio (13 teeth)	7AJJ-17			

* Indicates not illustrated.

♦ Indicates Tune-up Kit part.

• Indicates common-wear parts. Maintain stock to reduce downtime.

Parts and Maintenance

When tool life has expired, it is recommended that the tool be disassembled, degreased and parts separated by material for proper recycling.

Tool repair and maintenance should only be carried out by an authorized Service Center.

Refer all communications to the nearest **Ingersoll Rand** office or distributor.

Related Documentation

Manuals can be downloaded from ingersollrand.com

For additional information, refer to:

Product Safety Information Manual 04580353

Product Maintenance Information Manual 16606063

Product Information Manual 03539731

Notes:

Notes:

Notes:

[ingersollrand.com](https://www.ingersollrand.com)

© 2021 *Ingersoll Rand*

