



ASME B18.8.2

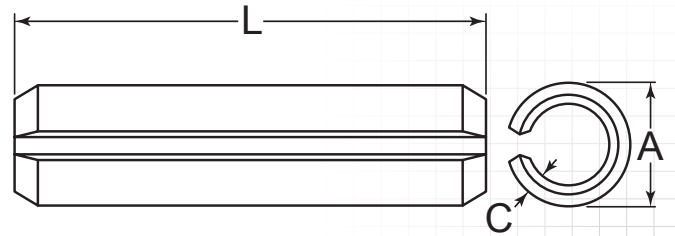
SLOTTED – IMPERIAL

DESCRIPTION

A single-turn rolled pin, formed with one straight parallel slot. Slotted pins are economical and save time because they can be installed in a single operation. The hollow design and slot give them their unique self-locking capabilities.

HOW TO IDENTIFY

1. Verify single-turn roll with parallel slot.
2. Measure diameter (A).
3. Measure length (L).
4. Look up the part in the chart below.



PREFIX MATERIAL/FINISH

SP	=	HIGH CARBON STEEL, ZINC CLEAR
SPP	=	HIGH CARBON STEEL, PLAIN*
SPPH	=	HIGH CARBON STEEL, PHOSPHATE
SPY	=	HIGH CARBON STEEL, ZINC YELLOW
SPS	=	420 STAINLESS STEEL, PLAIN

SPSP	=	420 STAINLESS STEEL, PASSIVATED
SPSP3P	=	302/304 STAINLESS STEEL, PASSIVATED

Material/finish combinations may not be available in all sizes.

ADDITIONAL SIZES AND FINISHES MAY BE AVAILABLE UPON REQUEST

ITEM NUMBER	(L) OVERALL LENGTH
1/16 (.063") (A) Outside Diameter	
(C) Wall Thickness: .012" Recommended Hole Diameter: .062-.065"	
	+.015/- .015"
PREFIX-062-0125	.125" (1/8)
PREFIX-062-0187	.188" (3/16)
PREFIX-062-0250	.250" (1/4)
PREFIX-062-0312	.313" (5/16)
PREFIX-062-0343	.344" (11/32)
PREFIX-062-0375	.375" (3/8)
PREFIX-062-0437	.438" (7/16)
PREFIX-062-0500	.500" (1/2)
PREFIX-062-0562	.563" (9/16)
PREFIX-062-0625	.625" (5/8)
PREFIX-062-0687	.688" (11/16)
PREFIX-062-0750	.750" (3/4)
PREFIX-062-0812	.813" (13/16)
PREFIX-062-0875	.875" (7/8)
PREFIX-062-0937	.938" (15/16)
PREFIX-062-1000	1.000" (1)

ITEM NUMBER	(L) OVERALL LENGTH
5/64 (.078") (A) Outside Diameter	
(C) Wall Thickness: .018" Recommended Hole Diameter: .078-.081"	
	+.015/- .015"
PREFIX-078-0187	.188" (3/16)
PREFIX-078-0250	.250" (1/4)
PREFIX-078-0312	.313" (5/16)
PREFIX-078-0375	.375" (3/8)
PREFIX-078-0437	.438" (7/16)
PREFIX-078-0500	.500" (1/2)
PREFIX-078-0562	.563" (9/16)
PREFIX-078-0625	.625" (5/8)
PREFIX-078-0687	.688" (11/16)
PREFIX-078-0750	.750" (3/4)
PREFIX-078-0812	.813" (13/16)
PREFIX-078-0875	.875" (7/8)
PREFIX-078-0937	.938" (15/16)
PREFIX-078-1000	1.000" (1)
	+.020/- .020"
PREFIX-078-1125	1.125" (1-1/8)
PREFIX-078-1250	1.250" (1-1/4)
PREFIX-078-1375	1.375" (1-3/8)
PREFIX-078-1500	1.500" (1-1/2)

ITEM NUMBER	(L) OVERALL LENGTH
3/32 (.094") (A) Outside Diameter	
(C) Wall Thickness: .022" Recommended Hole Diameter: .094-.097"	
	+.015/- .015"
PREFIX-093-0187	.188" (3/16)
PREFIX-093-0218	.219" (7/32)
PREFIX-093-0250	.250" (1/4)
PREFIX-093-0312	.313" (5/16)
PREFIX-093-0375	.375" (3/8)
PREFIX-093-0437	.438" (7/16)
PREFIX-093-0500	.500" (1/2)
PREFIX-093-0562	.563" (9/16)
PREFIX-093-0625	.625" (5/8)
PREFIX-093-0687	.688" (11/16)
PREFIX-093-0750	.750" (3/4)
PREFIX-093-0812	.813" (13/16)
PREFIX-093-0875	.875" (7/8)
PREFIX-093-0937	.938" (15/16)
PREFIX-093-1000	1.000" (1)
	+.020/- .020"
PREFIX-093-1125	1.125" (1-1/8)
PREFIX-093-1250	1.250" (1-1/4)
PREFIX-093-1375	1.375" (1-3/8)

FOR DETAILED SPECIFICATIONS AND TOLERANCES, VISIT HUYETT.COM.

Prices, materials, dimensions, tolerances, designs, and grades subject to change without notice. © 2015 G.L. Huyett

*Limited warranty for surface finish: 30 days from date of shipment. See page 8 for details.

SPRING PINS

HUYETT.COM • 785-392-3017

BOX 232 • MINNEAPOLIS, KS • 67467
SALES@HUYETT.COM • FAX 785-392-2845

SLOTTED – IMPERIAL

ASME B18.8.2

ITEM NUMBER	(L) OVERALL LENGTH
3/32 (.094") (A) Outside Diameter	
(C) Wall Thickness: .022" Recommended Hole Diameter: .094-.097"	
	+.020/- .020"
PREFIX-093-1500	1.500" (1-1/2)
PREFIX-093-1750	1.750" (1-3/4)

ITEM NUMBER	(L) OVERALL LENGTH
7/64 (.109") (A) Outside Diameter	
(C) Wall Thickness: .025" Recommended Hole Diameter: .109-.112"	
	+.015/- .015"
PREFIX-109-0250	.250" (1/4)
PREFIX-109-0312	.313" (5/16)
PREFIX-109-0375	.375" (3/8)
PREFIX-109-0437	.438" (7/16)
PREFIX-109-0500	.500" (1/2)
PREFIX-109-0562	.563" (9/16)
PREFIX-109-0625	.625" (5/8)
PREFIX-109-0687	.688" (11/16)
PREFIX-109-0750	.750" (3/4)
PREFIX-109-0812	.813" (13/16)
PREFIX-109-0875	.875" (7/8)
PREFIX-109-0937	.938" (15/16)
PREFIX-109-1000	1.000" (1)
	+.020/- .020"
PREFIX-109-1125	1.125" (1-1/8)
PREFIX-109-1250	1.250" (1-1/4)
PREFIX-109-1375	1.375" (1-3/8)
PREFIX-109-1500	1.500" (1-1/2)
PREFIX-109-1625	1.625" (1-5/8)
PREFIX-109-1750	1.750" (1-3/4)

ITEM NUMBER	(L) OVERALL LENGTH
1/8 (.125") (A) Outside Diameter	
(C) Wall Thickness: .028" Recommended Hole Diameter: .125-.129"	
	+.015/- .015"
PREFIX-125-0250	.250" (1/4)
PREFIX-125-0312	.313" (5/16)
PREFIX-125-0375	.375" (3/8)
PREFIX-125-0437	.438" (7/16)
PREFIX-125-0500	.500" (1/2)
PREFIX-125-0562	.563" (9/16)
PREFIX-125-0625	.625" (5/8)
PREFIX-125-0687	.688" (11/16)
PREFIX-125-0750	.750" (3/4)
PREFIX-125-0812	.813" (13/16)
PREFIX-125-0875	.875" (7/8)
PREFIX-125-0937	.938" (15/16)
PREFIX-125-1000	1.000" (1)

ITEM NUMBER	(L) OVERALL LENGTH
	+.020/- .020"
PREFIX-125-1125	1.125" (1-1/8)
PREFIX-125-1250	1.250" (1-1/4)
PREFIX-125-1375	1.375" (1-3/8)
PREFIX-125-1500	1.500" (1-1/2)
PREFIX-125-1625	1.625" (1-5/8)
PREFIX-125-1750	1.750" (1-3/4)
PREFIX-125-1875	1.875" (1-7/8)
PREFIX-125-2000	2.000" (2)
	+.025/- .025"
PREFIX-125-2250	2.250" (2-1/4)
PREFIX-125-2500	2.500" (2-1/2)

ITEM NUMBER	(L) OVERALL LENGTH
9/64 (.141") (A) Outside Diameter	
(C) Wall Thickness: .028" Recommended Hole Diameter: .140-.144"	
	+.015/- .015"
PREFIX-140-0375	.375" (3/8)
PREFIX-140-0500	.500" (1/2)
PREFIX-140-0562	.563" (9/16)
PREFIX-140-0625	.625" (5/8)
PREFIX-140-0687	.688" (11/16)
PREFIX-140-0750	.750" (3/4)
PREFIX-140-0812	.813" (13/16)
PREFIX-140-0875	.875" (7/8)
PREFIX-140-0937	.938" (15/16)
PREFIX-140-1000	1.000" (1)
	+.020/- .020"
PREFIX-140-1125	1.125" (1-1/8)
PREFIX-140-1250	1.250" (1-1/4)
PREFIX-140-1375	1.375" (1-3/8)
PREFIX-140-1500	1.500" (1-1/2)
PREFIX-140-1625	1.625" (1-5/8)
PREFIX-140-1750	1.750" (1-3/4)
PREFIX-140-1875	1.875" (1-7/8)
PREFIX-140-2000	2.000" (2)

ITEM NUMBER	(L) OVERALL LENGTH
5/32 (.156") (A) Outside Diameter	
(C) Wall Thickness: .032" Recommended Hole Diameter: .156-.160"	
	+.015/- .015"
PREFIX-156-0312	.313" (5/16)
PREFIX-156-0375	.375" (3/8)
PREFIX-156-0437	.438" (7/16)
PREFIX-156-0500	.500" (1/2)

ITEM NUMBER	(L) OVERALL LENGTH
PREFIX-156-0562	.563" (9/16)
PREFIX-156-0625	.625" (5/8)
PREFIX-156-0687	.688" (11/16)
PREFIX-156-0750	.750" (3/4)
PREFIX-156-0812	.813" (13/16)
PREFIX-156-0875	.875" (7/8)
PREFIX-156-0937	.938" (15/16)
PREFIX-156-1000	1.000" (1)
	+.020/- .020"
PREFIX-156-1093	1.094" (1-3/32)
PREFIX-156-1125	1.125" (1-1/8)
PREFIX-156-1250	1.250" (1-1/4)
PREFIX-156-1375	1.375" (1-3/8)
PREFIX-156-1500	1.500" (1-1/2)
PREFIX-156-1625	1.625" (1-5/8)
PREFIX-156-1750	1.750" (1-3/4)
PREFIX-156-1875	1.875" (1-7/8)
PREFIX-156-2000	2.000" (2)
	+.025/- .025"
PREFIX-156-2250	2.250" (2-1/4)
PREFIX-156-2500	2.500" (2-1/2)
PREFIX-156-2750	2.750" (2-3/4)

ITEM NUMBER	(L) OVERALL LENGTH
3/16 (.188") (A) Outside Diameter	
(C) Wall Thickness: .040" Recommended Hole Diameter: .187-.192"	
	+.015/- .015"
PREFIX-187-0312	.313" (5/16)
PREFIX-187-0375	.375" (3/8)
PREFIX-187-0437	.438" (7/16)
PREFIX-187-0500	.500" (1/2)
PREFIX-187-0562	.563" (9/16)
PREFIX-187-0625	.625" (5/8)
PREFIX-187-0687	.688" (11/16)
PREFIX-187-0750	.750" (3/4)
PREFIX-187-0812	.813" (13/16)
PREFIX-187-0875	.875" (7/8)
PREFIX-187-0937	.938" (15/16)
PREFIX-187-1000	1.000" (1)
	+.020/- .020"
PREFIX-187-1125	1.125" (1-1/8)
PREFIX-187-1250	1.250" (1-1/4)
PREFIX-187-1375	1.375" (1-3/8)
PREFIX-187-1500	1.500" (1-1/2)
PREFIX-187-1625	1.625" (1-5/8)
PREFIX-187-1687	1.688" (1-11/16)

TO ORDER, REPLACE PREFIX
WITH YOUR CHOICE:

SP • SPP • SPPH • SPY
SPS • SPSP • SPSP3P

FOR DETAILED SPECIFICATIONS AND TOLERANCES, VISIT HUYETT.COM.

Prices, materials, dimensions, tolerances, designs, and grades subject to change without notice. © 2015 G.L. Huyett

*Limited warranty for surface finish: 30 days from date of shipment. See page 8 for details.



ASME B18.8.2

SLOTTED – IMPERIAL

PREFIX MATERIAL/FINISH

SP	=	HIGH CARBON STEEL, ZINC CLEAR
SPP	=	HIGH CARBON STEEL, PLAIN*
SPPH	=	HIGH CARBON STEEL, PHOSPHATE
SPY	=	HIGH CARBON STEEL, ZINC YELLOW
SPS	=	420 STAINLESS STEEL, PLAIN

SPSP	=	420 STAINLESS STEEL, PASSIVATED
SPSP3	=	302/304 STAINLESS STEEL, PASSIVATED

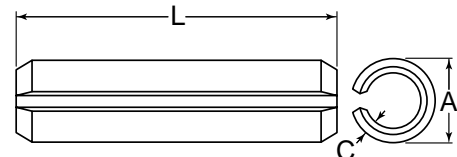
Material/finish combinations may not be available in all sizes.

ITEM NUMBER	(L) OVERALL LENGTH
PREFIX-187-1750	1.750" (1-3/4)
PREFIX-187-1875	1.875" (1-7/8)
PREFIX-187-2000	2.000" (2)
+.025/-0.025"	
PREFIX-187-2125	2.125" (2-1/8)
PREFIX-187-2250	2.250" (2-1/4)
PREFIX-187-2500	2.500" (2-1/2)
PREFIX-187-2750	2.750" (2-3/4)
PREFIX-187-3000	3.000" (3)
+.030/-0.030"	
PREFIX-187-3250	3.250" (3-1/4)
PREFIX-187-3500	3.500" (3-1/2)
PREFIX-187-4000	4.000" (4)

7/32 (.219") (A) Outside Diameter	
(C) Wall Thickness: .048" Recommended Hole Diameter: .219-.224"	
+.015/-0.015"	
PREFIX-218-0500	.500" (1/2)
PREFIX-218-0562	.563" (9/16)
PREFIX-218-0625	.625" (5/8)
PREFIX-218-0687	.688" (11/16)
PREFIX-218-0750	.750" (3/4)
PREFIX-218-0812	.813" (13/16)
PREFIX-218-0875	.875" (7/8)
PREFIX-218-0937	.938" (15/16)
PREFIX-218-1000	1.000" (1)
+.020/-0.020"	
PREFIX-218-1125	1.125" (1-1/8)
PREFIX-218-1250	1.250" (1-1/4)
PREFIX-218-1375	1.375" (1-3/8)
PREFIX-218-1500	1.500" (1-1/2)
PREFIX-218-1625	1.625" (1-5/8)
PREFIX-218-1750	1.750" (1-3/4)
PREFIX-218-1875	1.875" (1-7/8)
PREFIX-218-2000	2.000" (2)
+.025/-0.025"	
PREFIX-218-2250	2.250" (2-1/4)
PREFIX-218-2500	2.500" (2-1/2)
PREFIX-218-2750	2.750" (2-3/4)
PREFIX-218-3000	3.000" (3)

ITEM NUMBER	(L) OVERALL LENGTH
1/4 (.250") (A) Outside Diameter	
(C) Wall Thickness: .048" Recommended Hole Diameter: .250-.256"	
+.015/-0.015"	
PREFIX-250-0375	.375" (3/8)
PREFIX-250-0500	.500" (1/2)
PREFIX-250-0562	.563" (9/16)
PREFIX-250-0625	.625" (5/8)
PREFIX-250-0687	.688" (11/16)
PREFIX-250-0750	.750" (3/4)
PREFIX-250-0812	.813" (13/16)
PREFIX-250-0875	.875" (7/8)
PREFIX-250-0937	.938" (15/16)
PREFIX-250-1000	1.000" (1)
+.020/-0.020"	
PREFIX-250-1125	1.125" (1-1/8)
PREFIX-250-1250	1.250" (1-1/4)
PREFIX-250-1312	1.313" (1-5/16)
PREFIX-250-1375	1.375" (1-3/8)
PREFIX-250-1500	1.500" (1-1/2)
PREFIX-250-1625	1.625" (1-5/8)
PREFIX-250-1750	1.750" (1-3/4)
PREFIX-250-1875	1.875" (1-7/8)
PREFIX-250-2000	2.000" (2)
+.025/-0.025"	
PREFIX-250-2125	2.125" (2-1/8)
PREFIX-250-2250	2.250" (2-1/4)
PREFIX-250-2500	2.500" (2-1/2)
PREFIX-250-2750	2.750" (2-3/4)
PREFIX-250-3000	3.000" (3)
+.030/-0.030"	
PREFIX-250-3250	3.250" (3-1/4)
PREFIX-250-3500	3.500" (3-1/2)
PREFIX-250-3750	3.750" (3-3/4)
PREFIX-250-4000	4.000" (4)
+.035/-0.035"	
PREFIX-250-4500	4.500" (4-1/2)
PREFIX-250-5000	5.000" (5)
PREFIX-250-5500	5.500" (5-1/2)

ITEM NUMBER	(L) OVERALL LENGTH
5/16 (.313") (A) Outside Diameter	
(C) Wall Thickness: .063" (1/16) Recommended Hole Diameter: .312-.318"	
+.015/-0.015"	
PREFIX-312-0375	.375" (3/8)
PREFIX-312-0500	.500" (1/2)
PREFIX-312-0750	.750" (3/4)
PREFIX-312-0812	.813" (13/16)
PREFIX-312-0875	.875" (7/8)
PREFIX-312-0937	.938" (15/16)
PREFIX-312-1000	1.000" (1)
+.020/-0.020"	
PREFIX-312-1125	1.125" (1-1/8)
PREFIX-312-1250	1.250" (1-1/4)
PREFIX-312-1312	1.313" (1-5/16)
PREFIX-312-1375	1.375" (1-3/8)
PREFIX-312-1500	1.500" (1-1/2)
PREFIX-312-1625	1.625" (1-5/8)
PREFIX-312-1750	1.750" (1-3/4)
PREFIX-312-1875	1.875" (1-7/8)
PREFIX-312-2000	2.000" (2)
+.025/-0.025"	
PREFIX-312-2250	2.250" (2-1/4)
PREFIX-312-2500	2.500" (2-1/2)
PREFIX-312-2750	2.750" (2-3/4)
PREFIX-312-3000	3.000" (3)
+.030/-0.030"	
PREFIX-312-3250	3.250" (3-1/4)
PREFIX-312-3500	3.500" (3-1/2)
PREFIX-312-3750	3.750" (3-3/4)
PREFIX-312-4000	4.000" (4)
+.035/-0.035"	
PREFIX-312-4500	4.500" (4-1/2)
PREFIX-312-5000	5.000" (5)



HUYETT.COM

IN STOCK
ORDERS SHIP NEXT
BUSINESS DAY

FOR DETAILED SPECIFICATIONS AND TOLERANCES, VISIT HUYETT.COM.
Prices, materials, dimensions, tolerances, designs, and grades subject to change without notice. © 2015 G.L. Huyett
*Limited warranty for surface finish: 30 days from date of shipment. See page 8 for details.

SPRING PINS

HUYETT.COM • 785-392-3017

BOX 232 • MINNEAPOLIS, KS • 67467
SALES@HUYETT.COM • FAX 785-392-2845

SLOTTED – IMPERIAL

ASME B18.8.2

ITEM NUMBER	(L) OVERALL LENGTH
-------------	-----------------------

3/8 (.375")

(A) Outside Diameter

(C) Wall Thickness: .077"

Recommended Hole Diameter: .375-.382"

+ .015/- .015"	
PREFIX-375-0750	.750" (3/4)
PREFIX-375-0812	.813" (13/16)
PREFIX-375-0875	.875" (7/8)
PREFIX-375-0937	.938" (15/16)
PREFIX-375-1000	1.000" (1)
+ .020/- .020"	
PREFIX-375-1125	1.125" (1-1/8)
PREFIX-375-1250	1.250" (1-1/4)
PREFIX-375-1375	1.375" (1-3/8)
PREFIX-375-1500	1.500" (1-1/2)
PREFIX-375-1625	1.625" (1-5/8)
PREFIX-375-1750	1.750" (1-3/4)
PREFIX-375-1875	1.875" (1-7/8)
PREFIX-375-2000	2.000" (2)
+ .025/- .025"	
PREFIX-375-2125	2.125" (2-1/8)
PREFIX-375-2250	2.250" (2-1/4)
PREFIX-375-2500	2.500" (2-1/2)
PREFIX-375-2750	2.750" (2-3/4)
PREFIX-375-3000	3.000" (3)
+ .030/- .030"	
PREFIX-375-3250	3.250" (3-1/4)
PREFIX-375-3500	3.500" (3-1/2)
PREFIX-375-3750	3.750" (3-3/4)
PREFIX-375-4000	4.000" (4)
+ .035/- .035"	
PREFIX-375-4500	4.500" (4-1/2)
PREFIX-375-5000	5.000" (5)
PREFIX-375-6000	6.000" (6)

7/16 (.438")

(A) Outside Diameter

(C) Wall Thickness: .077"

Recommended Hole Diameter: .437-.445"

+ .015/- .015"	
PREFIX-437-1000	1.000" (1)
+ .020/- .020"	
PREFIX-437-1125	1.125" (1-1/8)
PREFIX-437-1250	1.250" (1-1/4)
PREFIX-437-1375	1.375" (1-3/8)
PREFIX-437-1500	1.500" (1-1/2)
PREFIX-437-1625	1.625" (1-5/8)
PREFIX-437-1750	1.750" (1-3/4)
PREFIX-437-1875	1.875" (1-7/8)
PREFIX-437-2000	2.000" (2)

ITEM NUMBER	(L) OVERALL LENGTH
-------------	-----------------------

+ .025/- .025"	
PREFIX-437-2250	2.250" (2-1/4)
PREFIX-437-2500	2.500" (2-1/2)
PREFIX-437-2750	2.750" (2-3/4)
PREFIX-437-3000	3.000" (3)
+ .030/- .030"	
PREFIX-437-3250	3.250" (3-1/4)
PREFIX-437-3500	3.500" (3-1/2)
PREFIX-437-3750	3.750" (3-3/4)
PREFIX-437-4000	4.000" (4)

1/2 (.500")

(A) Outside Diameter

(C) Wall Thickness: .094" (3/32)

Recommended Hole Diameter: .500-.510"

+ .015/- .015"	
PREFIX-500-1000	1.000" (1)
+ .020/- .020"	
PREFIX-500-1125	1.125" (1-1/8)
PREFIX-500-1250	1.250" (1-1/4)
PREFIX-500-1375	1.375" (1-3/8)
PREFIX-500-1500	1.500" (1-1/2)
PREFIX-500-1625	1.625" (1-5/8)
PREFIX-500-1750	1.750" (1-3/4)
PREFIX-500-1875	1.875" (1-7/8)
PREFIX-500-2000	2.000" (2)
+ .025/- .025"	
PREFIX-500-2250	2.250" (2-1/4)
PREFIX-500-2500	2.500" (2-1/2)
PREFIX-500-2750	2.750" (2-3/4)
PREFIX-500-3000	3.000" (3)
+ .030/- .030"	
PREFIX-500-3250	3.250" (3-1/4)
PREFIX-500-3500	3.500" (3-1/2)
PREFIX-500-3750	3.750" (3-3/4)
PREFIX-500-4000	4.000" (4)
+ .035/- .035"	
PREFIX-500-4500	4.500" (4-1/2)
PREFIX-500-5000	5.000" (5)
PREFIX-500-5500	5.500" (5-1/2)
PREFIX-500-6000	6.000" (6)

5/8 (.625")

(A) Outside Diameter

(C) Wall Thickness: .125" (1/8)

Recommended Hole Diameter: .625-.636"

+ .020/- .020"	
PREFIX-625-1500	1.500" (1-1/2)
PREFIX-625-1625	1.625" (1-5/8)
PREFIX-625-1750	1.750" (1-3/4)
PREFIX-625-2000	2.000" (2)

ITEM NUMBER	(L) OVERALL LENGTH
-------------	-----------------------

+ .025/- .025"	
PREFIX-625-2250	2.250" (2-1/4)
PREFIX-625-2500	2.500" (2-1/2)
PREFIX-625-2625	2.625" (2-5/8)
PREFIX-625-2750	2.750" (2-3/4)
PREFIX-625-3000	3.000" (3)
+ .030/- .030"	
PREFIX-625-3250	3.250" (3-1/4)
PREFIX-625-3500	3.500" (3-1/2)
PREFIX-625-3750	3.750" (3-3/4)
PREFIX-625-4000	4.000" (4)
+ .035/- .035"	
PREFIX-625-4250	4.250" (4-1/4)
PREFIX-625-4500	4.500" (4-1/2)
PREFIX-625-4750	4.750" (4-3/4)
PREFIX-625-5000	5.000" (5)
PREFIX-625-5250	5.250" (5-1/4)
PREFIX-625-5500	5.500" (5-1/2)
PREFIX-625-5750	5.750" (5-3/4)
PREFIX-625-6000	6.000" (6)

3/4 (.750")

(A) Outside Diameter

(C) Wall Thickness: .150"

Recommended Hole Diameter: .750-.764"

+ .020/- .020"	
PREFIX-750-1500	1.500" (1-1/2)
PREFIX-750-2000	2.000" (2)
+ .025/- .025"	
PREFIX-750-2250	2.250" (2-1/4)
PREFIX-750-2500	2.500" (2-1/2)
PREFIX-750-2750	2.750" (2-3/4)
PREFIX-750-3000	3.000" (3)
+ .030/- .030"	
PREFIX-750-3250	3.250" (3-1/4)
PREFIX-750-3500	3.500" (3-1/2)
PREFIX-750-3750	3.750" (3-3/4)
PREFIX-750-4000	4.000" (4)
+ .035/- .035"	
PREFIX-750-4250	4.250" (4-1/4)
PREFIX-750-4500	4.500" (4-1/2)
PREFIX-750-4750	4.750" (4-3/4)
PREFIX-750-5000	5.000" (5)
PREFIX-750-5250	5.250" (5-1/4)
PREFIX-750-5500	5.500" (5-1/2)
PREFIX-750-5750	5.750" (5-3/4)
PREFIX-750-6000	6.000" (6)

ADDITIONAL SIZES
AND FINISHES MAY BE
AVAILABLE UPON REQUEST

FOR DETAILED SPECIFICATIONS AND TOLERANCES, VISIT HUYETT.COM.

Prices, materials, dimensions, tolerances, designs, and grades subject to change without notice. © 2015 G.L. Huyett

*Limited warranty for surface finish: 30 days from date of shipment. See page 8 for details.