



1/2" DRIVE SHALLOW IMPACT SOCKETS, 6 POINT, SAE

Black Industrial Finish

Product Code	Size (Inches)	OAL (Inches)	A		B		C		D		E		F	
			Drive End Diameter (Inches)	Working End Diameter (Inches)	Broach Depth (Inches)	Bolt Clearance Depth (Inches)	Bolt Clearance Diameter (Inches)	Nose Length (Inches)						
4-612	3/8	1 1/2	29/32	19/32	1/4	7/8	11/32	11/16						
4-614	7/16	1 1/2	29/32	23/32	5/16	7/8	13/32	11/16						
4-616	1/2	1 1/2	29/32	13/16	13/32	7/8	15/32	11/16						
4-618	9/16	1 1/2	29/32	7/8	13/32	7/8	15/32	11/16						
4-620	5/8	1 1/2	31/32	31/32	15/32	7/8	1/2	-						
4-622	11/16	1 1/2	1 1/16	1 1/16	13/16	27/32	5/8	-						
4-624	3/4	1 1/2	1 1/8	1 1/8	13/16	27/32	11/16	-						
4-626	13/16	1 1/2	1 1/4	1 1/4	13/16	13/16	25/32	-						
4-628	7/8	1 1/2	1 5/16	1 5/16	13/16	13/16	7/8	-						
4-630	15/16	1 3/4	1 3/8	1 3/8	1 1/32	1 1/16	15/16	-						
4-632	1	1 3/4	1 7/16	1 7/16	1 1/32	1 1/16	1	-						
4-634	1 1/16	2	1 9/16	1 9/16	1 1/4	1 9/32	1 1/32	-						
4-636	1 1/8	2	1 5/8	1 5/8	1 1/4	1 9/32	1 1/8	-						
4-638	1 3/16	2	1 11/16	1 11/16	1 1/4	1 9/32	1 5/32	-						
4-640	1 1/4	2	1 3/4	1 3/4	13/16	1 9/32	1 7/32	-						
4-642	1 5/16	2	1 1/2	1 7/8	7/8	1 1/8	1 1/16	-						
4-644	1 3/8	2	1 1/2	1 15/16	7/8	1 3/8	1 1/16	-						
4-646	1 7/16	2	1 1/2	2	29/32	1 3/8	1 1/16	-						
4-648	1 1/2	2	1 9/16	2 1/8	29/32	1 3/8	1 1/16	-						

Fed. Spec: ANSI B107.2

WS-4-7RC 7 Piece 1/2" Drive Shallow 6 Point Impact Socket Set on Clip Rail

Contents Include:

Product Code	Size (Inches)	Product Code	Size (Inches)
4-614	7/16	4-622	11/16
4-616	1/2	4-624	3/4
4-618	9/16	4-626	13/16
4-620	5/8		



WS-4-7RC

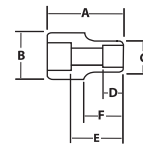
WS-4-11RC 11 Piece 1/2" Drive Shallow 6 Point Impact Socket Set on Clip Rail

Contents Include:

Product Code	Size (Inches)	Product Code	Size (Inches)	Product Code	Size (Inches)
4-616	1/2	4-624	3/4	4-632	1
4-618	9/16	4-626	13/16	4-634	1 1/16
4-620	5/8	4-628	7/8	4-636	1 1/8
4-622	11/16	4-630	15/16		



WS-4-11RC



WS-4-14 14 Piece 1/2" Drive Shallow 6 Point Impact Socket Set on Clip Rail

Contents Include:

Product Code	Size (Inches)	Product Code	Size (Inches)	Product Code	Size (Inches)
4-612	3/8	4-622	11/16	4-632	1
4-614	7/16	4-624	3/4	4-634	1 1/16
4-616	1/2	4-626	13/16	4-636	1 1/8
4-618	9/16	4-628	7/8	4-640	1 1/4
4-620	5/8	4-630	15/16		



WS-4-14

WS-4-19RC 19 Piece 1/2" Drive Shallow 6 Point Impact Socket Set on Clip Rail

Contents Include:

Product Code	Size (Inches)	Product Code	Size (Inches)	Product Code	Size (Inches)	Product Code	Size (Inches)
4-612	3/8	4-622	11/16	4-632	1	4-642	1 5/16
4-614	7/16	4-624	3/4	4-634	1 1/16	4-644	1 3/8
4-616	1/2	4-626	13/16	4-636	1 1/8	4-646	1 7/16
4-618	9/16	4-628	7/8	4-638	1 3/16	4-648	1 1/2
4-620	5/8	4-630	15/16	4-640	1 1/4		



WS-4-19RC

Features

- SUPERTORQUE[®] lobular openings for greater turning power without deforming the fastener.
- Designed for maximum engagement on 6 point fasteners.
- Suitable for use with pneumatic and electric impact wrenches.
- Specially heat treated for impact use to provide long life, safety, and durability.



TOOLS@HEIGHT
DROP PREVENTION SYSTEM

Side hole in socket permits use with Snap-on Industrial Brands Tools@Height drive tools such as ratchets, extensions and u-joints



4-612, 4-624

