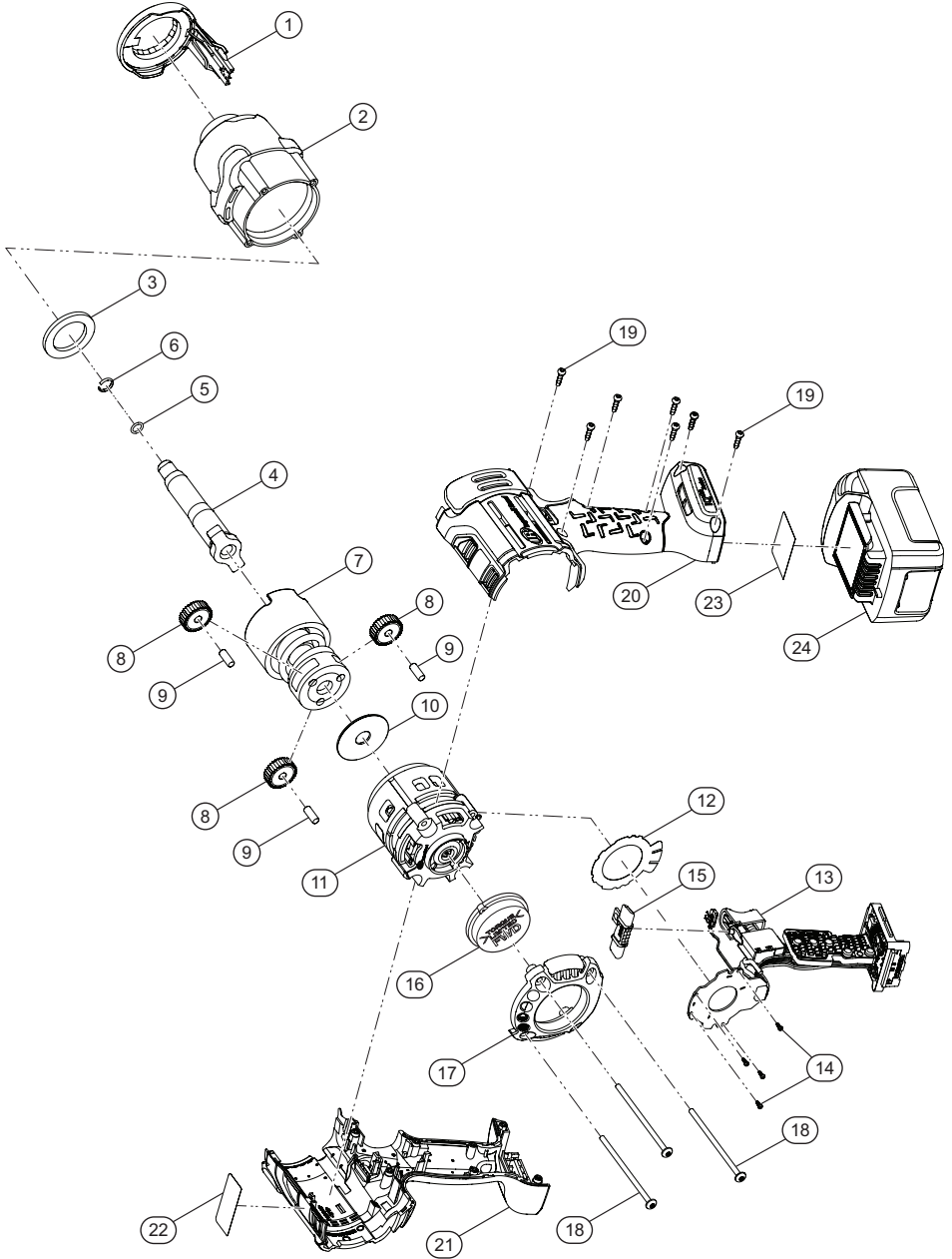


W7252-TL, Cordless Impact Wrench - Exploded View



(Dwg. TL-W7252-TL-PLM-1)



## W7252-TL, Cordless Impact Wrench - Parts List

Item	Part Description	Part Number (CCN)	Item	Part Description	Part Number (CCN)
1	LED Kit	W7152-KLED (47631609001)	17	Backcap Kit	W7152-K40B (47631613001)
	Hammer Case Kit	W7152-K727 (47631602001)		Fastener Kit	W7152-K105 (47631614001)
1	LED Assembly	---	14	Screw, Hall PCBAs (4 required)	---
2	Hammer Case Assembly	---	18	Screw, Hammer Case (4 required)	---
3	Washer	---	19	Screw, Housing (7 required)	---
	Socket Retainer Kit	2125QTI-K425 (80107733)		Housing Kit	W7152-K40 (47631612001)
5	O-Ring	---	20	Left Housing	---
6	Retaining Ring	---	21	Right Housing	---
7	Impact Mechanism Kit	W7152-K724 (47631605001)	22	Warning Label	---
	Gear Kit	W7152-K37 (47631606001)	19	Screw, Housing (7 required)	---
8	Planet Gear (3 required)	---		Label Kit	W7152-K99 (47631615001)
9	Gear Pin (3 required)	---	22	Warning Label	---
10	Cam Thrust Washer	---	23	Information Label	---
11	Brushless Motor Kit	W7152-K54 (47631607001)	24	Battery, BL2022	BL2022 (47515902001)
12	Insulator Sheet Kit	W7152-K624 (47633589001)	*	Battery Charger	BC1121 (47507879001)
	Drive Kit	W7152-K93 (47631611001)	*	Protective Tool Boot	W7152-BOOT (47621732001)
13	Drive Assembly	---	*	Protective Tool Boot	W7152-BOOTX (47621734001)
23	Information Label	---	*	Protective Battery Boot	BL2010-BOOT (47510964001)
15	Directional Switch Kit	W7152-K75 (47631610001)	*	Tool Bag	TB4 (47543666001)
16	Torque Limited Regulator Kit	TK-W7252-TL-249		Grease	
	Anvil Kit	W7252-K626 (47633585001)	*	IR #105 (1 LB can)	105-1LB (04279147)
4	1/2" Anvil, 2" Extended	---		IR #105 (8 LB can)	105-8LB (04264875)
5	O-Ring	---		IR #67 (1 LB can)	67-1LB (03773009)
6	Retaining Ring	---		IR #67 (8 LB can)	67-8LB (03820008)
			*	Grease Gun	R000A2-228 (03095015)

\* Indicates not illustrated.

## Parts and Maintenance

When tool life has expired, it is recommended that the tool be disassembled, degreased and parts separated by material for proper recycling.

Tool repair and maintenance should only be carried out by an Authorized Service Center.

Refer all communications to the nearest **Ingersoll Rand** office or distributor.

## Related Documentation

Manuals can be downloaded from [ingersollrand.com](http://ingersollrand.com)

For additional information, refer to:

Product Safety Information Manual 04581146

Product Information Manual TL-W7252-TL-PIM

Declaration of Conformity 47589598001

Hanger Install / Removal Instruction Card 47641906001 and 47642459001

