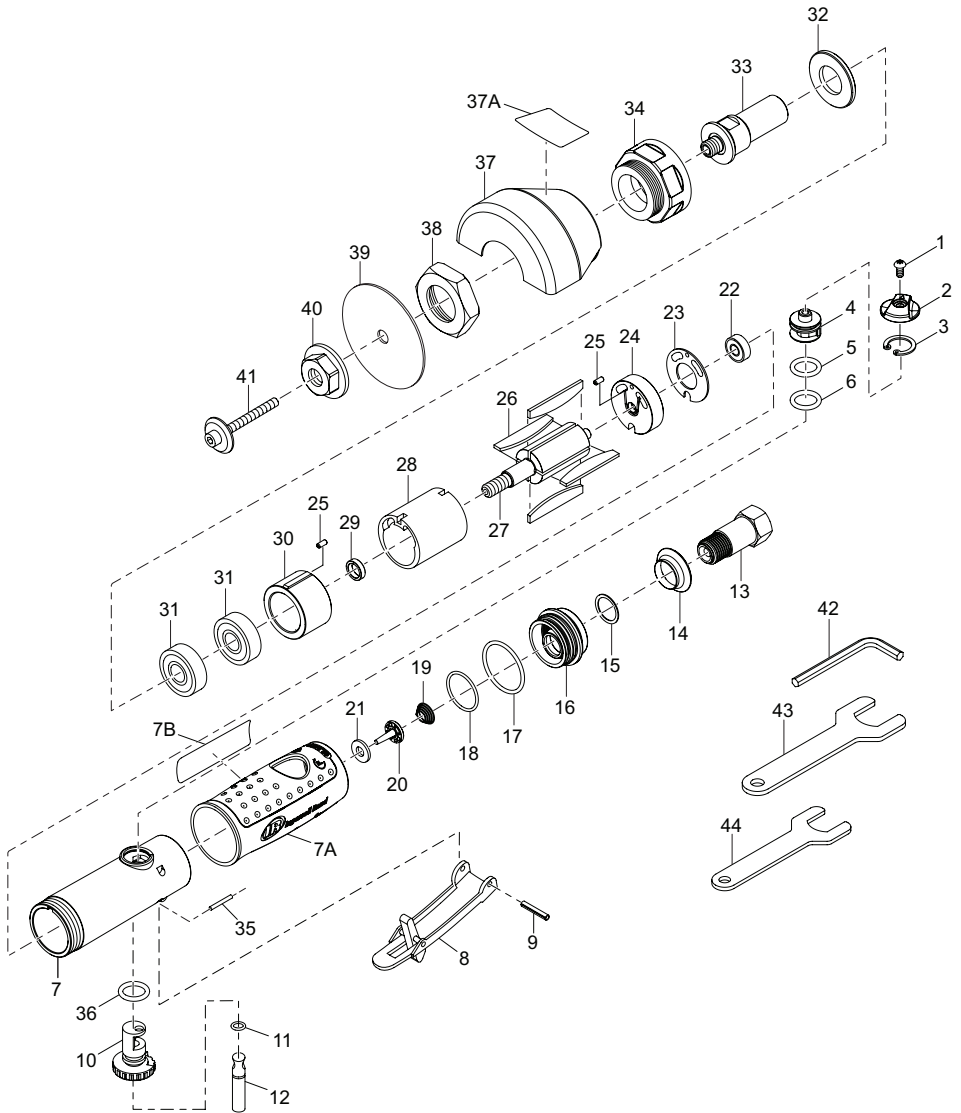


426, Reversible Cut-Off Tool - Exploded View



(Dwg.47509194001)



426, Reversible Cut-Off Tool - Parts List

Item	Part Description	Part Number	(CCN)	Item	Part Description	Part Number	(CCN)
1	Screw (M4 x 8)	426-638	(47509709001)	24	Rear Plate	426-12	(47509685001)
2	Regulator (FWD-REV)	426-165	(47509667001)	25	Pin (2.5 x 6L)	426-553	(47509690001)
3	Snap Ring (RTW-18)	426-338	(47509710001)	26	Rotor Blade	426-42	(47509686001)
4	Regulator Valve	426-249	(47509711001)	27	Rotor	426-53	(47509687001)
5	O-Ring (AS015)	426-65	(47509668001)	28	Cylinder	426-3	(47509688001)
6	O-Ring (S16)	426-367-A	(47509701001)	29	Bearing Spacer	426-111	(47509689001)
7	Motor Housing	426-40	(47509682001)	30	Front Plate	426-11	(47509691001)
7A	Housing Sleeve	426-747	(47509675001)	31	Bearing (6000ZZ) (2 required)	426-24	(47509692001)
7B	Model Label	426-301	(47515704001)	32	Washer (22 x 33.2 x 3T)	426-248	(47509693001)
8	Lever	426-273	(47509677001)	33	Disc Retainer	426-18	(47509694001)
9	Pin (3 x 24L)	426-15	(47509676001)	34	Clamp Nut	426-28	(47509695001)
10	Regulator (HI-LO)	426-249-A	(47509672001)	35	Pin (2.8 X 25.8)	426-120	(47509698001)
11	O-Ring (3.5 x 1.4)	426-282	(47509669001)	36	O-Ring (P10)	426-367-D	(47509681001)
12	Valve Stem	426-302	(47509670001)	37	Guard	426-106	(47509696001)
13	Air Inlet	426-565	(47509673001)	37A	Warning Label	426-99	(47515707001)
14	Muffler Body	426-311-A	(47509705001)	38	Nut	426-27	(47509697001)
15	Washer	426-487-A	(47509706001)	39	3" Cut-Off Wheel (5 required)	9520	(80117443)
16	Muffler	426-311	(47509674001)		3" Cut-Off Wheel (50 required)	9521	(45539756)
17	O-Ring (AS125)	426-367-B	(47509707001)	40	Nut	426-305	(47509699001)
18	O-Ring (S30)	426-367-C	(47509708001)	41	Screw	426-78	(47509700001)
19	Spring	426-250	(47509678001)	42	Hex	426-69	(47509703001)
20	Valve	426-526	(47509679001)	43	Stop Spanner	426-26-B	(47509704001)
21	Washer (6 x 13.8 x 1.6T)	426-246	(47509680001)	44	Stop Spanner	426-26-A	(47509702001)
22	Bearing (626ZZ)	426-22	(47509683001)				
23	Washer (17 x 33.2 x 0.8T)	426-247	(47509684001)				

Parts and Maintenance

When tool life has expired, it is recommended that the tool be disassembled, degreased and parts separated by material for proper recycling.

Tool repair and maintenance should only be carried out by an authorized Service Center.

Refer all communications to the nearest **Ingersoll Rand** office or distributor.

Related Documentation

Manuals can be downloaded from ingersollrand.com

For additional information, refer to:

Product Safety Information Manual 45661436

Product Information Manual 47509834