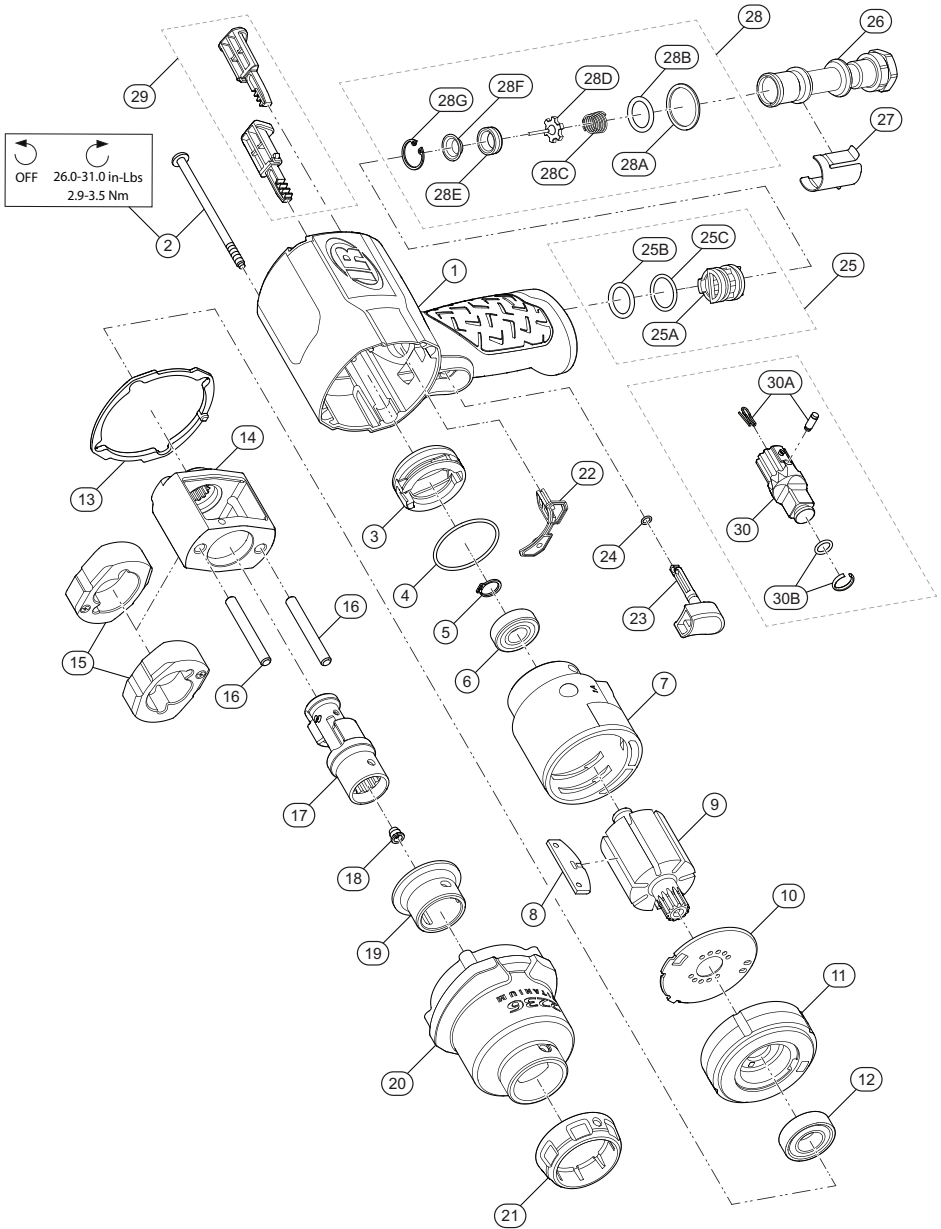


2236QTiMAX Series, Air Impact Wrench - Exploded View



(Dwg. TL-2236MAX-PLM-1)



TL-2236MAX-PLM
Edition 2
September 2023

2236QTI MAX Series, Air Impact Wrench - Parts List

Item	Part Description	Part Number	Item	Part Description	Part Number
*	Housing Assembly	TA-2236QMAX-A040	29	Button Kit	TK-2236-075RD
1	Housing	---	*	Forward Button	---
22	Gasket, Motor	---	*	Reverse Button	---
25	Reverse Valve Assembly	---	30	Anvil Assembly (replaceable)	
29	Button Kit	---		for model 2236QTI MAX (standard)	TD-2236-626SD
2	Screw, Hammer Case (4 required)	2135-638		for model 2236QTI MAX-2 (extended)	TD-2236-626SD-2
*	Power Regulator Assembly	TD-2236-249RD		for model 2236PQTI MAX (Pin)	TD-2236P-726SD
3	Power Regulator	---	*	Anvil	---
4	O-Ring, Power Regulator	---	30A	Anvil Retainer Kit (all Splined Anvils)	TK-2236-716
5	Retaining Ring	2131-6	† 30B	Socket Retainer Kit (1/2" Ring-type)	
6	Ball Bearing (Cylinder)	2131-97		for models 2236QTI MAX and 2236QTI MAX-2	2125QTI-K425
7	Cylinder	TP-2236-003		Socket Retainer Kit (1/2" Pin-type)	
† 8	Vane Pack (set of 7)	2235-42-7	† *	for model 2236PQTI MAX	2125PTI-K425
9	Rotor	2235-53	*	Tune-up Kit	TK-2236-GTK
10	Wear Plate	TP-2236-011X	4	O-Ring, Power Regulator	---
11	End Plate	TP-2236-011	5	Retaining Ring	---
12	Ball Bearing (End Plate)	2235-97	6	Ball Bearing (Cylinder)	---
† 13	Hammer Case Gasket	TP-2236-036RD	8	Vane Pack (set of 7)	---
*	Hammer Mechanism Kit	2235-THK1	12	Ball Bearing (End Plate)	---
14	Hammer Frame	---	13	Hammer Case Gasket	---
15	Hammers (2 required)	2235-724	22	Gasket, Motor	---
16	Hammer Pins	---	24	O-Ring, Trigger	---
*	Anvil Assembly (internal)	TD-2236-526SD	25B	O-Ring, Reverse Valve (top-black)	---
17	Anvil	---	25C	O-Ring, Reverse Valve (bottom-blue)	---
18	Grease Fitting	131-188	28	Inlet Parts Kit	---
*	Hammer Case Assembly	TD-2236SD-727Ti	*	Grease	---
19	Bushing, Hammer Case	TP-2236-641SD	*	Boot, 2236Max Series	2236M-BOOT
20	Hammer Case	---	*	Inlet Clip Removal Tool	2131-322
21	Retaining Pin Guard	TP-2236SD-961	*	Socket Retainer Kit (1/2" Ring-type) - 10 Pack	2125QTI-K425-10
† 22	Gasket, Motor	TP-2236-283	† *	Air Care Kit (grease gun, grease, oil)	105-LBK1
† *	Trigger Assembly	2135-D93	*	Grease (replacement tube for - LBK1)	105-4T
23	Trigger	---	*	Air Tool Oil (4 oz. bottle)	1024
24	O-Ring, Trigger	---	*	Grease (1 lb can)	105-1LB
25	Reverse Valve Assembly	2131-A329	*	Grease (8 lb can)	105-8LB
25A	Reverse Valve	---	*	Grease Gun	R000A2-228
25B	O-Ring, Reverse Valve (top - black)	---	* Indicates not illustrated. † To keep downtime to a minimum, it's desirable to have certain repair parts on hand. We recommend that you stock one (pair or set) of each part indicated by a (†) for every four tools in service.		
25C	O-Ring, Reverse Valve (bottom - blue)	---			
*	Inlet Bushing Assembly	2135-D565A			
26	Inlet Bushing	---			
27	Inlet Clip	2131-57			
28	Inlet Parts Kit	2135-K303			
28A	Washer	---			
28B	O-Ring, Seal	---			
28C	Throttle Spring	---			
28D	Throttle Valve	---			
28E	Valve Seat	---			
28F	Seat Support	---			
28G	Retainer	---			

Parts and Maintenance

When tool life has expired, it is recommended that the tool be disassembled, degreased and parts separated by material for proper recycling.

Tool repair and maintenance should only be carried out by an Authorized Service Center.

Refer all communications to the nearest **Ingersoll Rand** office or distributor.

Related Documentation

Manuals can be downloaded from ingersollrand.com

For additional information, refer to:

Product Safety Information Manual 04580916

Product Information Manual TL-2236MAX-PIM

Declaration of Conformity TL-2236MAX-DOC



ingersollrand.com
© 2023 Ingersoll Rand

TL-2236MAX-PLM
Edition 2
September 2023