

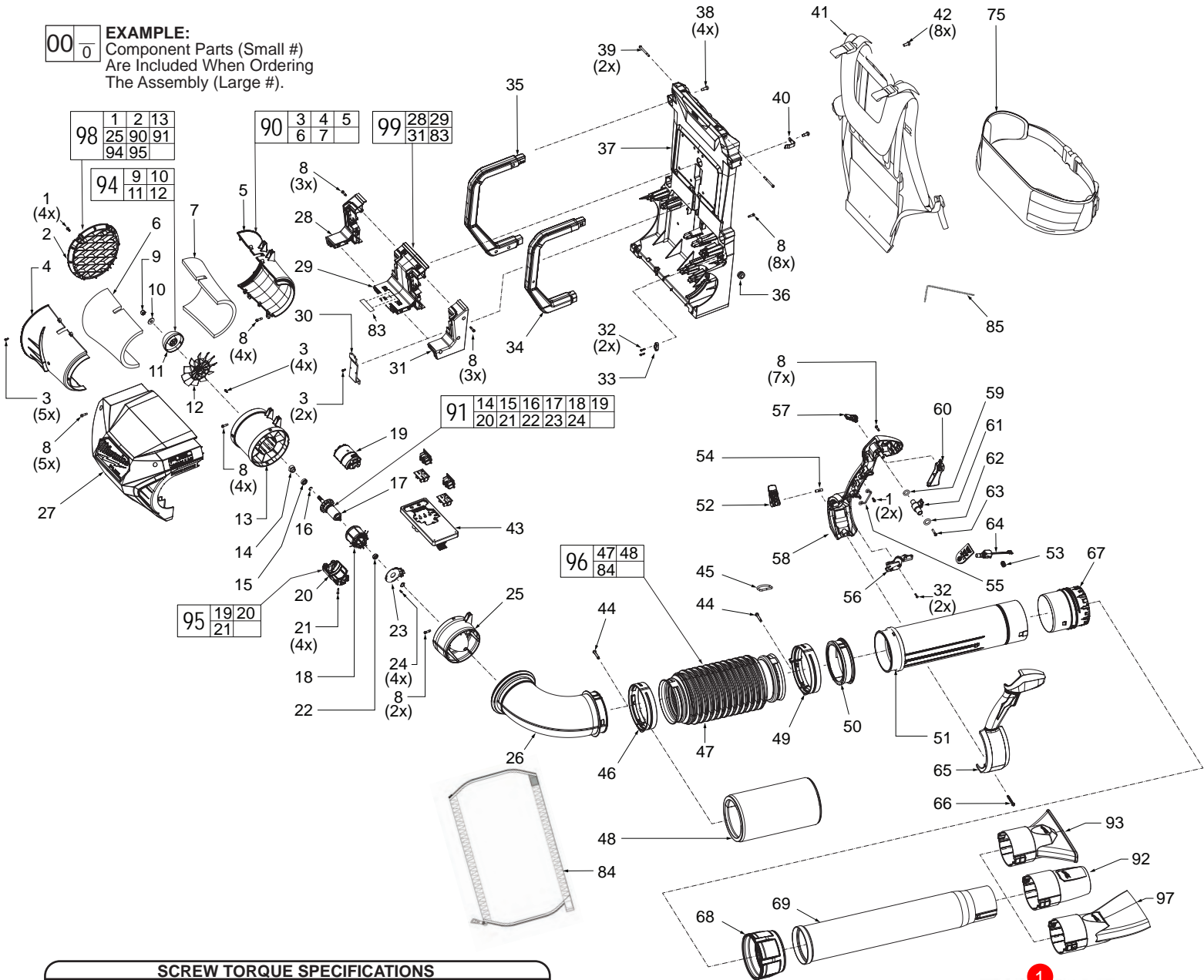


SERVICE PARTS LIST

BULLETIN NO.
54-05-2715

SPECIFY CATALOG NO. AND SERIAL NO. WHEN ORDERING PARTS		REVISED BULLETIN	DATE
M18 FUEL™ DUAL BATTERY BACKPACK BLOWER			Feb. 2024
CATALOG NO. 3009-20	STARTING SERIAL NO. P23A	WIRING INSTRUCTION See Page 3 and 4	

EXAMPLE:
Component Parts (Small #)
Are Included When Ordering
The Assembly (Large #).



SCREW TORQUE SPECIFICATIONS

FIG.	PART NO.	WHERE USED	SEAT TORQUE	
			(kgf-cm)	(lb-in)
1	05-88-1220	Interface Middle	8+/-1	7
3	05-88-0089	Inlet Muffler Cover	3.5+/-0.5	3
3	05-88-0089	Inlet Duct	5.5+/-0.5	5
8	06-82-1076	Inlet Cover	12.5+/-1.0	11
8	06-82-1076	Inlet Duct Support	12.5+/-1.0	11
8	06-82-1076	Inlet Duct	12.5+/-1.0	11
8	06-82-1076	Battery Interface	14+/-1.5	12
8	06-82-1076	Backplate	14+/-1.5	12
8	06-82-1076	Handle Support	10+/-1	9
21	05-81-0277	Motor Housing	10 +/1	9
24	06-82-0243	PCBA	3+/-0.3	3
32	06-82-1087	Backplate	4+/-0.5	3
38	06-82-0247	Backplate	20+/-2	17
39	05-81-2550	Backplate	10+/-1	9
42	05-81-0132	Harness	30+/-3	26
44	05-81-2005	Clamp	25+/-2.5	22
63	05-88-0014	Handle Housing	8+/-1	7

Screw Tightening Sequence:



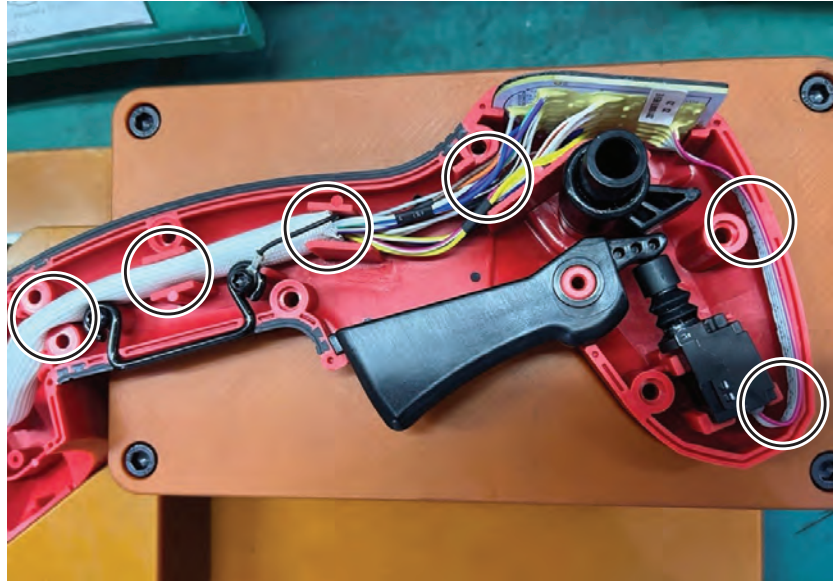
Part Numbers and Descriptions are on Page 2

FIG.	PART NO.	DESCRIPTION OF PART	NO. REQ.	FIG.	PART NO.	DESCRIPTION OF PART	NO. REQ.
1	05-88-1220	M4 x 10mm Pan Hd. T-20 Screw	(6)	49	28-10-0104	Large Clamp	(1)
2	42-52-0047	Inlet Vent	(1)	50	34-40-0234	Tube Pivot Ring	(1)
3	05-88-0089	M3 x 8mm Pan Hd. T-10 Screw	(11)	51	22-22-0023	Throttle Control Tube	(1)
4	-----	Inlet Muffler Cover	(1)	52	31-42-0017	Cam Lock	(1)
5	-----	Inlet Muffler Support	(1)	53	-----	Rubber Grommet	(1)
6	-----	Inlet Muffler Cover Foam	(1)	54	31-10-0024	Lever Lock Pin	(1)
7	-----	Inlet Muffler Support Side Foam	(1)	55	22-38-0101	Grounding Wire	(1)
8	06-82-1076	M4 x 16mm Pan Hd. T-20 Screw	(36)	56	22-06-0022	Power Cable Bracket	(1)
9	05-55-0033	M7 x 7.5mm Nylock Nut	(1)	57	31-15-0109	Cruise Control Lever	(1)
10	45-88-0161	Washer	(1)	58	31-44-0362	Handle Support Left Half	(1)
11	-----	Fan Dome	(1)	59	34-40-0237	O-Ring	(1)
12	-----	Fan	(1)	60	23-66-0087	Trigger	(1)
13	-----	Inlet Duct	(1)	61	31-15-0318	Cruise Control Inner Cam	(1)
14	-----	Pressed Double D	(1)	62	34-40-0238	O-Ring	(1)
15	-----	Ball Bearing	(1)	63	05-88-0014	M4 x 20mm Pan Hd. T-20 Screw	(1)
16	-----	Inverted Retaining Ring	(1)	64	23-66-0088	Fuel Gauge PCBA	(1)
17	-----	Rotor	(1)	65	31-44-0363	Handle Cover Right Half	(1)
18	-----	Stator	(1)	66	05-74-0200	M4 x 36.5mm Hex Recess Screw	(1)
19	-----	Motor Housing Support	(1)	67	42-90-0034	Threaded Tube Adapter	(1)
20	-----	Motor Housing Cover	(1)	68	42-90-0038	Threaded Tube Coupler	(1)
21	05-81-0277	M3 x 16mm Pan Hd. T-10 Screw	(4)	69	22-22-0024	Telescopic Tube	(1)
22	-----	Ball Bearing	(1)	75	49-16-2798	Hip Belt (Accessory)	(1)
23	-----	PCBA Assembly	(1)	81	10-22-0543	Warning Label (Not Shown)	(1)
24	06-82-0243	M2 x 6mm Pan Hd. T-6 Screw	(4)	82	12-20-0495	Service Nameplate (Not Shown)	(1)
25	43-72-0061	Outlet Duct	(1)	83	-----	Logo Label	(1)
26	43-33-0022	Elbow	(1)	84	-----	Fabric Sleeve	(1)
27	31-50-0214	Inlet Cover	(1)	85	43-96-0016	T25 Torx Key	(1)
28	-----	Interface Left Half	(1)	90	-----	Inlet Muffler Kit	(1)
29	-----	Interface Middle	(1)	91	-----	Motor Assembly	(1)
30	31-50-0217	Wire Cover	(1)	92	31-12-0121	Tapered Nozzle Attachment	(1)
31	-----	Interface Right Half	(1)	93	31-12-0122	Flared Nozzle Attachment	(1)
32	06-82-1087	M3 x 12mm Pan Hd. T-10 Screw	(2)	94	-----	Fan Kit	(1)
33	31-17-0195	Cord Clamp	(1)	95	-----	Motor Housing Kit	(1)
34	31-44-0361	Right Lift Handle	(1)	96	14-46-3009	Corrugate and Foam w/ Sleeve Assembly	(1)
35	31-44-0359	Left Lift Handle	(1)	97	49-16-2791	Angled Flare Nozzle Attachment	(1)
36	44-76-0024	Power Cable Strain Relief	(1)	98	42-14-0101	Blower Rear Mount Assembly	(1)
37	28-28-0048	Backplate	(1)	99	14-38-0117	Battery Interface Service Kit	(1)
38	06-82-0247	M6 x 16mm T-30 Screw	(4)				
39	05-81-2550	M4 x 41mm T-20 Machine Screw	(2)				
40	42-70-0116	Nozzle Hook	(1)				
41	23-94-0013	Harness Assembly	(1)				
42	05-81-0132	M6 x 14mm T-30 Screw	(8)				
43	22-80-0033	Main Control Board Assembly	(1)				
44	05-81-2005	M5 x 28mm Pan Hd. T-25 Screw	(2)				
45	34-40-0233	D-Ring	(1)				
46	28-10-0103	Small Clamp	(1)				
47	22-22-0022	Convolute Tube	(1)				
48	34-60-0057	Retaining Ring & Foam	(1)				

FIG. 81-83 NOTES
A clean, dry surface is essential for proper performance for any adhesive system. The area intended for application of any adhesive label or nameplate must be prepared by cleaning with isopropyl alcohol. The solvent is to be applied with a clean, lint free applicator and the surface allowed to dry before applying any label or nameplate.

Wire Routing

Ensure wires are in traps and channels before installing the Handle Cover (65)



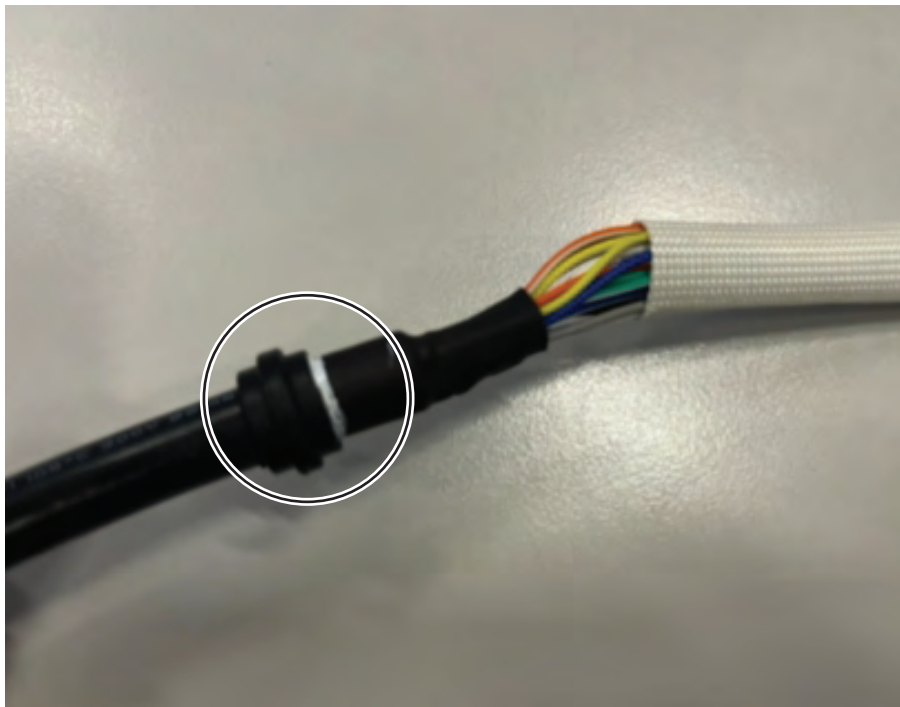
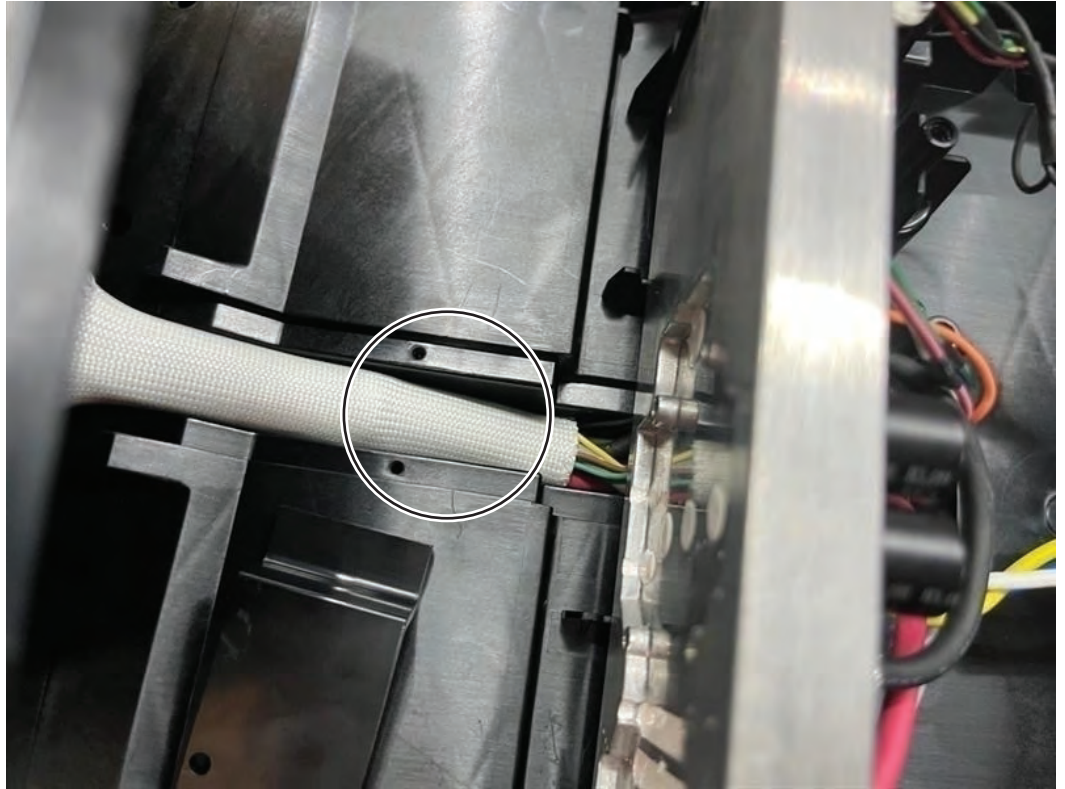
Cord Clamp

Power Cable Strain Relief

Confirm that the white marking is in-between the Cord Clamp (33) and the Power Cable Strain Relief (36)

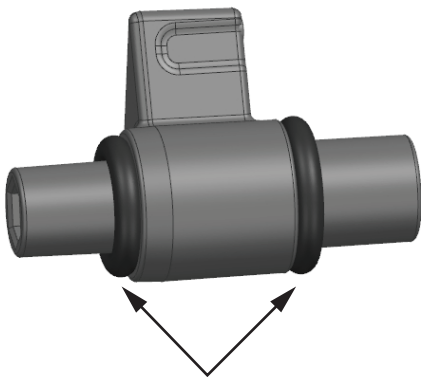
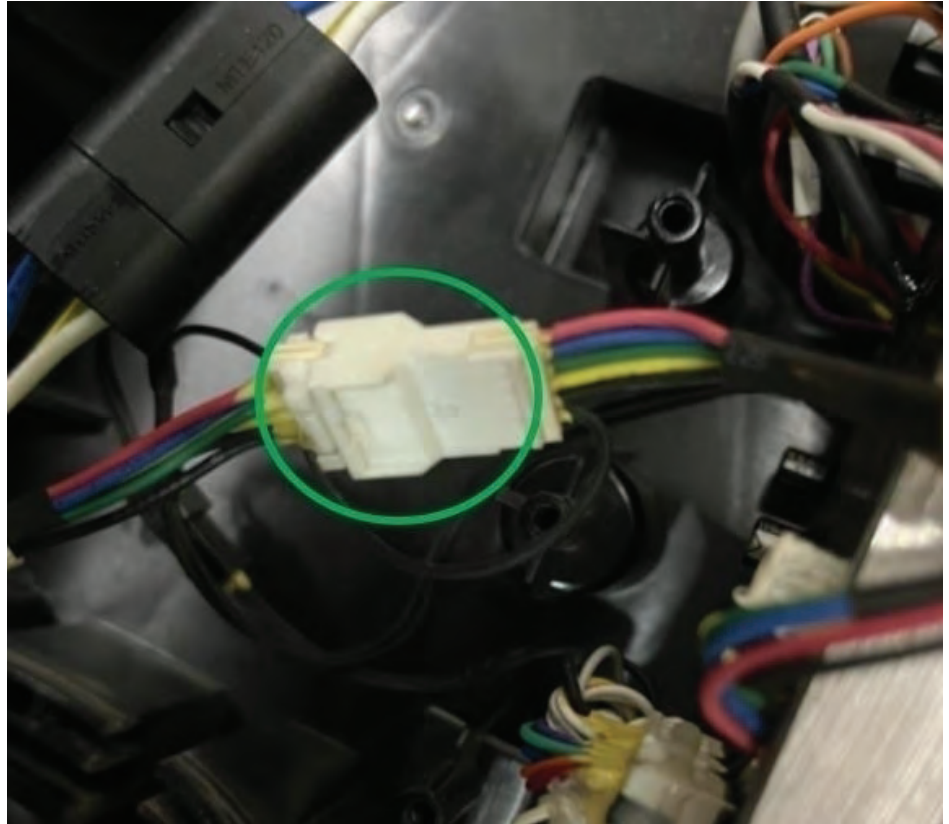
Wire Routing

Confirm wires are in the channel of the backplate. (37)



Power Cable Strain Relief (36) is to be placed in front of the white line.

Apply 1g of silicone grease to the area circled in green.



Apply 0.3g of silicone grease around the O-rings.



Apply 0.2g of red loctite to the bottom portion of the threads on the bolt. (39)