

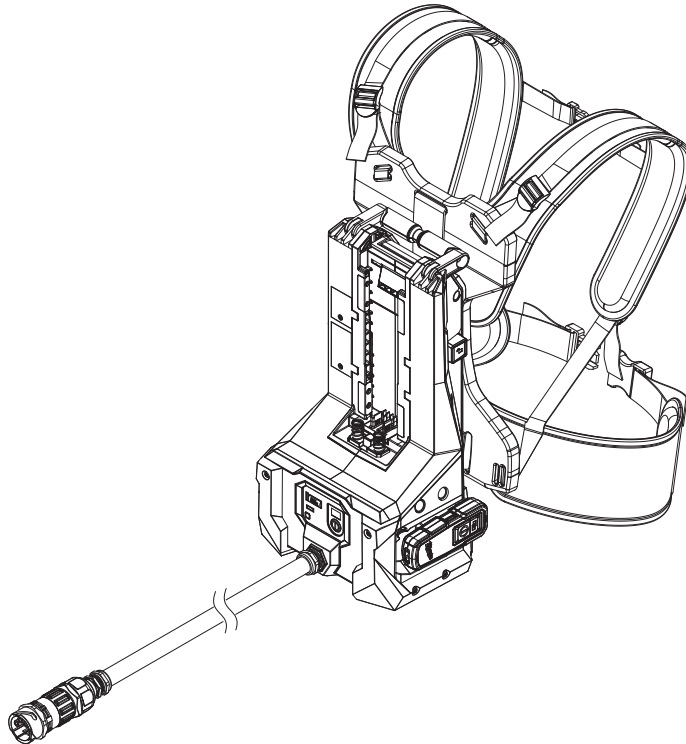


SERVICE PARTS LIST

BULLETIN NO.
54-QC-F372

SPECIFY CATALOG NO. AND SERIAL NO. WHEN ORDERING PARTS				REVISED BULLETIN	DATE
MX FUEL™ HIGH CYCLE CONCRETE VIBRATOR					Sep. 2024
CATALOG NO.	MXF372	SERIAL NO.	P48A	WIRING INSTRUCTION	

SERVICE BOM LISTING PAGE 2



Only maintenance, service, repairs, and replacements of parts as defined in the Operator's Manual can be performed by the user.

All other repairs are to ONLY be performed by personnel authorized by MILWAUKEE TOOL. Do not attempt to install other parts; this COULD void your tool warranty.

For service, parts, or inquiries, contact us:

- Customer Service at 1.800.SAWDUST (1.800.729.3878)
- E-Service tool repair at: www.milwaukeetool.com/e-service
- Find a local authorized MILWAUKEE service location at Milwaukeetool.com
- Find a MILWAUKEE factory Service Center Location or MILWAUKEE factory Central Repair Center at Milwaukeetool.com. Send the following, posted paid and insured:
 - Your name, address, and phone number
 - Description of the issues
 - Copy of the proof of purchase
 - Tool, charger, and batteries involved with the issues

MILWAUKEE factory Central Repair Centers:

MILWAUKEE TOOL
Central Repair
1401 Sycamore Avenue
Greenwood, MS 38930

MILWAUKEE TOOL
Central Repair
2198 Southtech Drive
Greenwood, IN 46143

SERVICE BILL OF MATERIAL (BOM) LISTING

FIG.	PART NO.	DESCRIPTION OF PART	NO. REQ.
5	1000	Quick-Release Backplate	(1)
131	3701	Remote Assembly	(1)
171	10-22-0670	Warning Label	(1)
172	12-20-9975	Service Nameplate	(1)
422	12-20-9906	Service Nameplate for Whips (Not Shown)	(1)

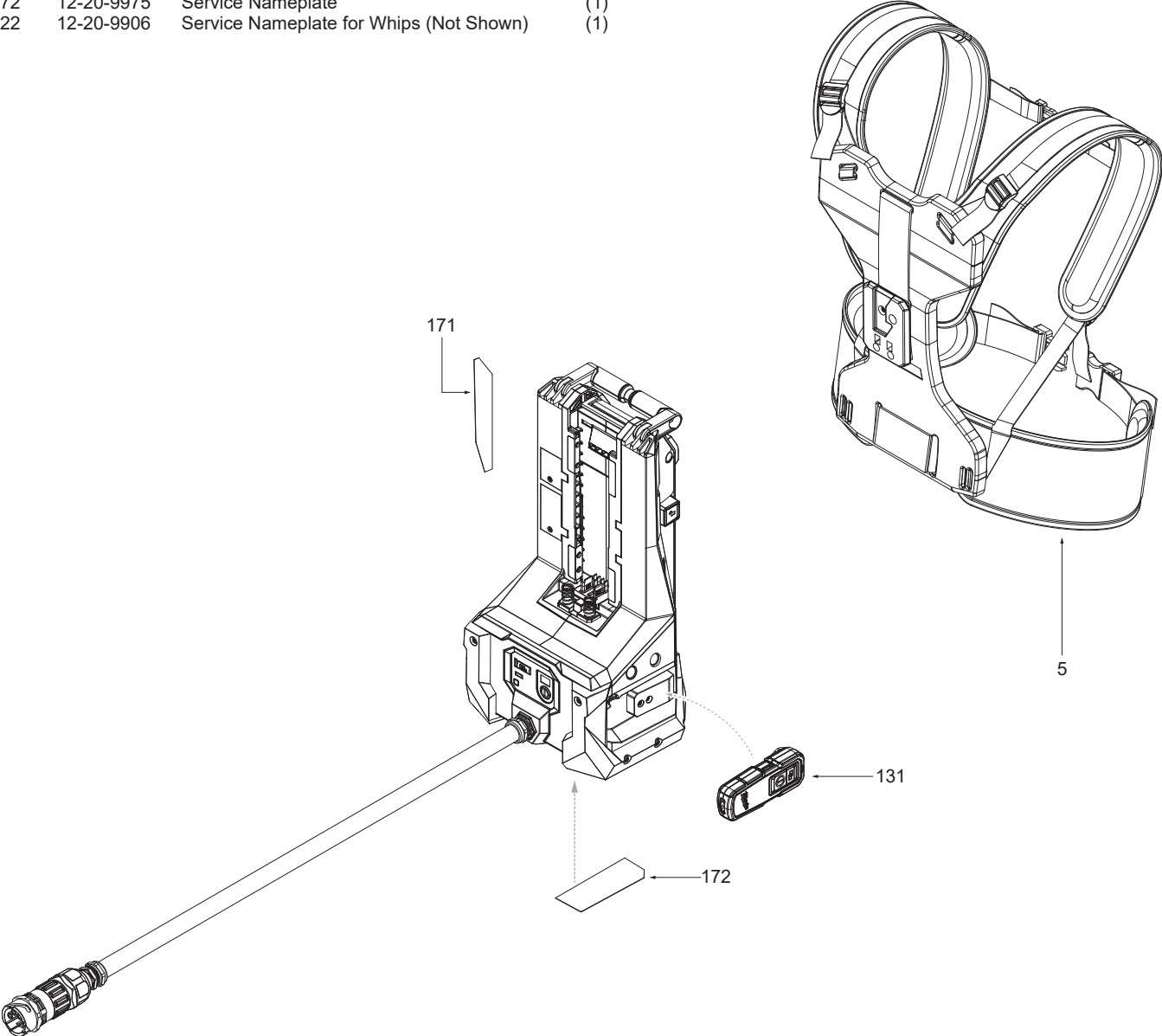


FIG.	PART NO.	DESCRIPTION OF PART	NO. REQ.
21	48-37-0718H	48MM Head and 7' Whip Assembly, Accessory	(1)
22	48-37-1618H	48MM Head and 16' Whip Assembly, Accessory (Not Shown)	(1)
23	48-37-3218H	48MM Head and 32' Whip Assembly, Accessory (Not Shown)	(1)
31	48-37-0722H	59MM Head and 7' Whip Assembly, Accessory (Not Shown)	(1)
32	48-37-1622H	59MM Head and 16' Whip Assembly, Accessory (Not Shown)	(1)
33	48-37-3222H	59MM Head and 32' Whip Assembly, Accessory (Not Shown)	(1)

