

END-SUCTION CENTRIFUGAL PUMPS

Series: BCS
0.75 - 3 HP @ 3500 RPM
0.5 HP @ 1750 RPM
1 & 3 phases



SUCTION

1¼" or 1½" NPT horizontal

DISCHARGE

1" or 1¼" NPT vertical

SPHERICAL SOLIDS HANDLING

Up to 3/8" diameter

MAX. WORKING PRESSURE

175 PSIG

MAX. TEMPERATURES

250°F (121°C)

BODY

AISI 316 stainless steel

INTERMEDIATE COUPLING

Cast iron

IMPELLER

Design: open

Material: AISI 316 stainless steel

SEAL

Design: mechanical, type 01.

Material: carbon/silicon-carbide faces, Viton elastomers and 316 stainless steel metal parts.

SEAL PLATE

AISI 316 stainless steel

SHAFT SLEEVE

AISI 316 stainless steel

O-RINGS

Viton

MOTOR

NEMA standard 56J frame motors from 0.75 to 3 HP at 3500 RPM and 0.5 HP at 1750 RPM. Open drip-proof and totally enclosed fan-cooled.

Single phase 115/230 V (3 HP model is 230 V only). Built in overload with auto reset provided. Three phase 208–230/460V.

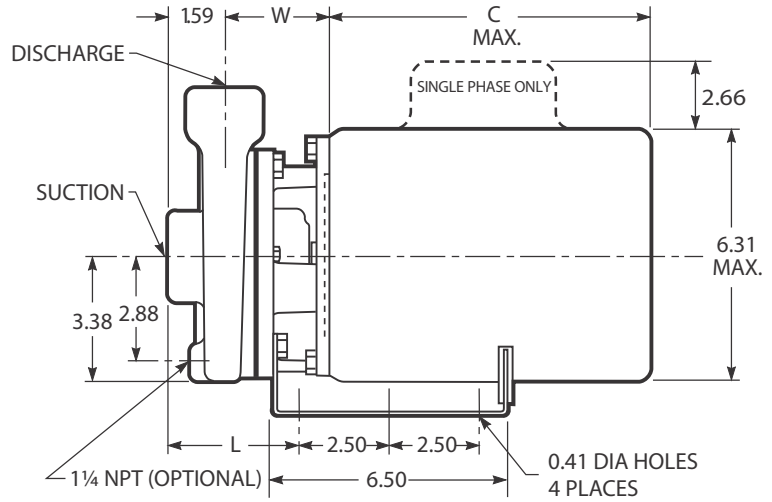
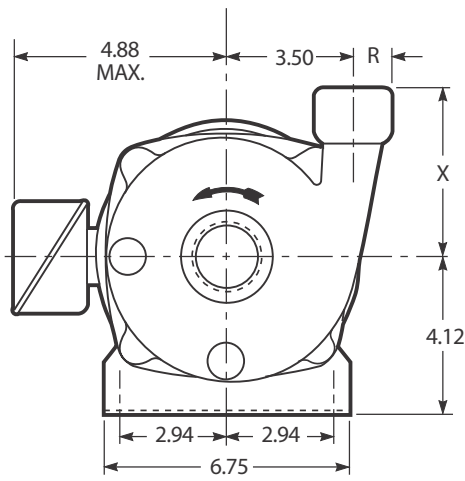
Overload protection must be provided.

HARDWARE

AISI 304 stainless steel

PAINT

Solvent based enamel (only intermediate coupling)



DIMENSIONS IN INCHES

Dimensions and Weights – Determined by Pump

| MODEL | SIZE | DIMENSIONS | | | | WEIGHT MAX. OF PUMP |
|---------------|---------|------------|------|------|------|---------------------|
| | | L | R | W | X | |
| BCS 1 x 1¼-5 | 1 x 1¼ | 3.75 | 0.94 | 3.01 | 4.62 | 17 |
| BCS 1¼ x 1½-5 | 1¼ x 1½ | 3.62 | 1.06 | 2.88 | 4.56 | 17 |

Available Motor Weights and Dimensions

| HP | SINGLE PHASE | | THREE PHASE | | C MAX. LENGTH |
|------|--------------|------|-------------|------|---------------|
| | ODP | TEFC | ODP | TEFC | |
| 0.5 | 16 | 21 | 19 | 18 | 10.5 |
| 0.75 | 19 | 24 | 21 | 21 | 11 |
| 1 | 22 | 26 | 23 | 21 | 11.38 |
| 1.5 | 28 | 35 | 27 | 27 | 12.06 |
| 2 | 33 | 39 | 32 | 33 | 13 |
| 3 | 38 | 47 | 36 | 42 | 14 |

NOTES:

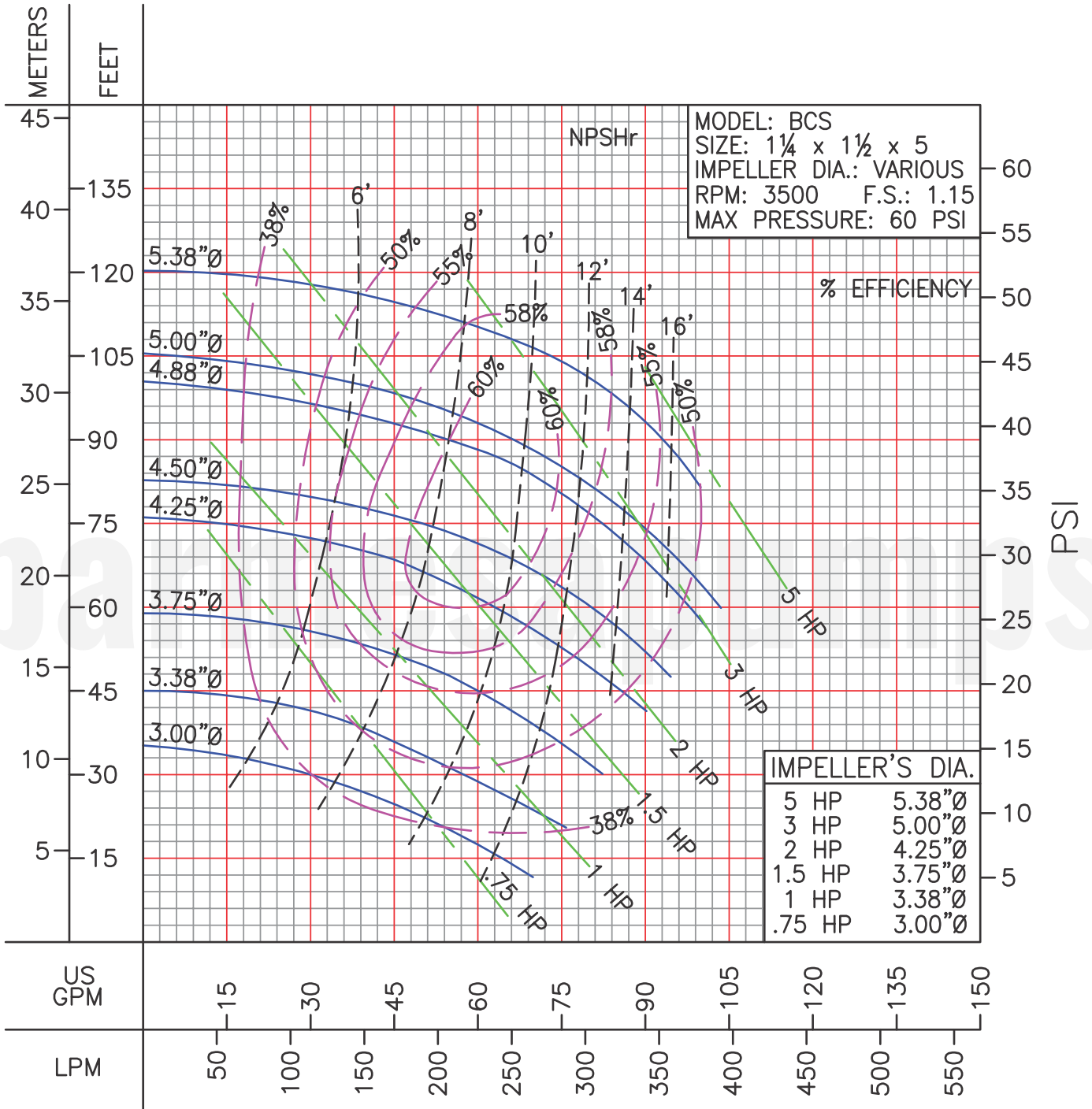
1. Pumps will be shipped with top vertical discharge as standard, for other orientations, remove casing bolts, rotate to desired position, and tighten 3/8" bolts to 24 lbf-ft.
2. Dimensions in inches, weight in pounds.
3. Not to be used for construction purposes unless certified.
4. Motor dimensions may vary with motor manufacturers.

*** Weight is liquid end only. For complete pump, add weight of applicable motor.**

IMPORTANT!

1. Never use this pump to handle explosive liquids.

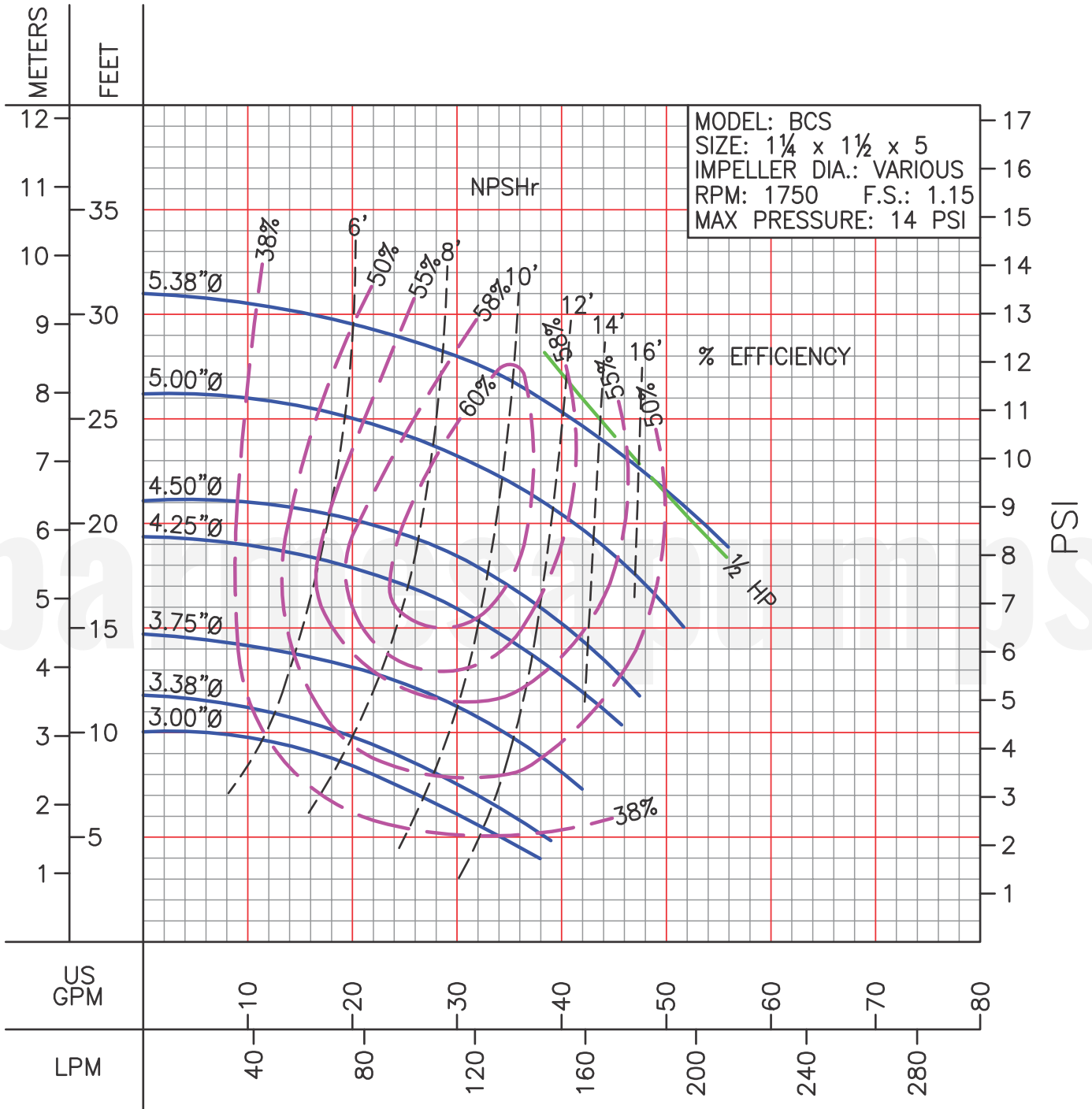
PERFORMANCE CURVES



LIQUID: WATER
 SPECIFIC GRAVITY: 1.00

TEMPERATURE: 70° F (21° C)
 MAXIMUM DIA. SOLIDS: .38 in

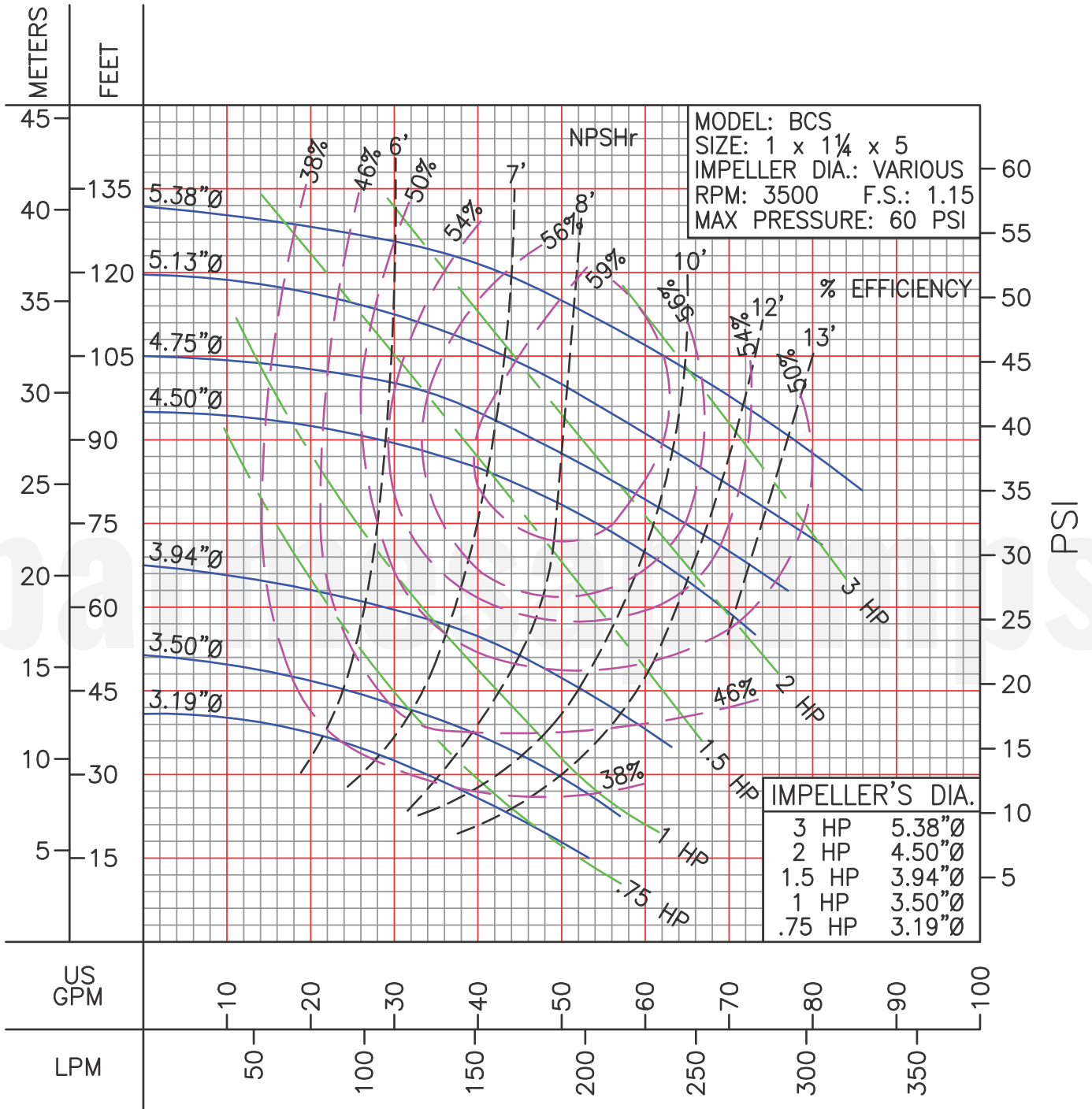
PERFORMANCE CURVES



LIQUID: WATER
 SPECIFIC GRAVITY: 1.00

TEMPERATURE: 70° F (21° C)
 MAXIMUM DIA. SOLIDS: .38 in

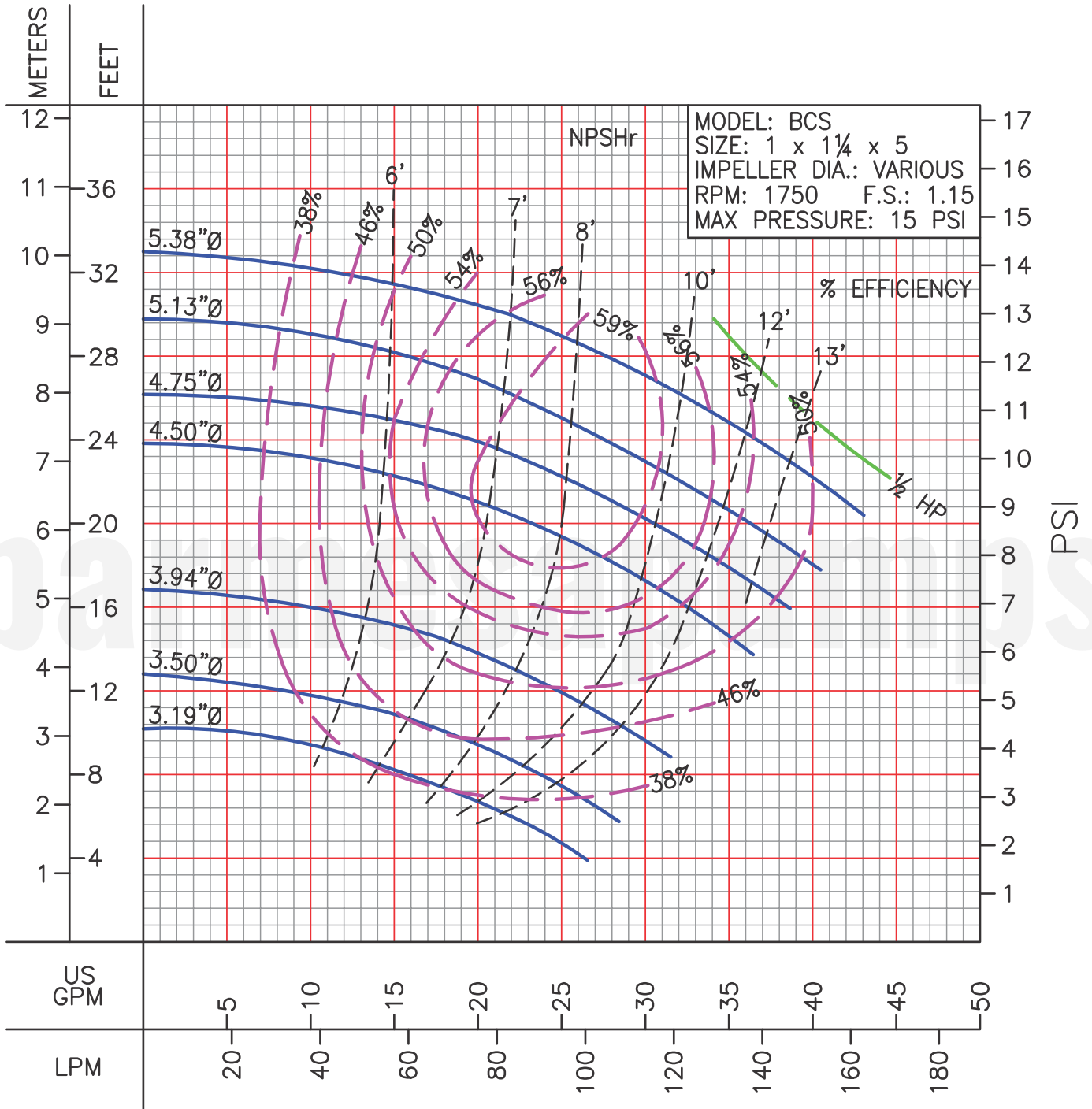
PERFORMANCE CURVES



LIQUID: WATER
 SPECIFIC GRAVITY: 1.00

TEMPERATURE: 70° F (21° C)
 MAXIMUM DIA. SOLIDS: .38 in

PERFORMANCE CURVES



LIQUID: WATER
 SPECIFIC GRAVITY: 1.00

TEMPERATURE: 70° F (21° C)
 MAXIMUM DIA. SOLIDS: .38 in