

# SELF-PRIMING CENTRIFUGAL SOLIDS HANDLING PUMP

Series: SH8-U  
Suction: 8"  
Discharge: 8"  
Spherical solids handling: 3"



**SIZE**  
8"x8", 125 lb

**LIQUID TEMPERATURE**  
160°F (71 °C)

**CASING**  
Cast iron ASTM A-48 class 30. Maximum operating pressure 86 psi (593 KPa).

**IMPELLER**  
*Design:* 2 vane, open.  
*Material:* ductile iron no. 65-45-12

**SHAFT**  
Alloy steel no. 4140

**SHAFT SLEEVE**  
316 series stainless steel

**WEAR PLATE**  
Carbon steel no. 1015. Replaceable.

**COVER PLATE**  
Cast iron ASTM A-48 class 30, weight 37 lbs.  
Removable/adjustable.

**FLAP VALVE**  
Neoprene with steel reinforcing

**BEARING HOUSING**  
Cast iron ASTM A-48 class 30

**SEAL PLATE**  
Cast iron ASTM A-48 class 30

**BEARING - PUMP END**  
Open single ball, radial load.

**BEARING - DRIVE END**  
Open double ball, thrust load.

**SEAL CAVITY AND BEARING LUBRICATION**  
SAE no. 30 non detergent oil, pump includes oil level sight gauges.

**GASKETS**  
Buna-N, compressed synthetic fibers, PTFE, vegetable fiber, cork and rubber.

**O-RINGS**  
Buna-N

**HARDWARE**  
Standard plated steel

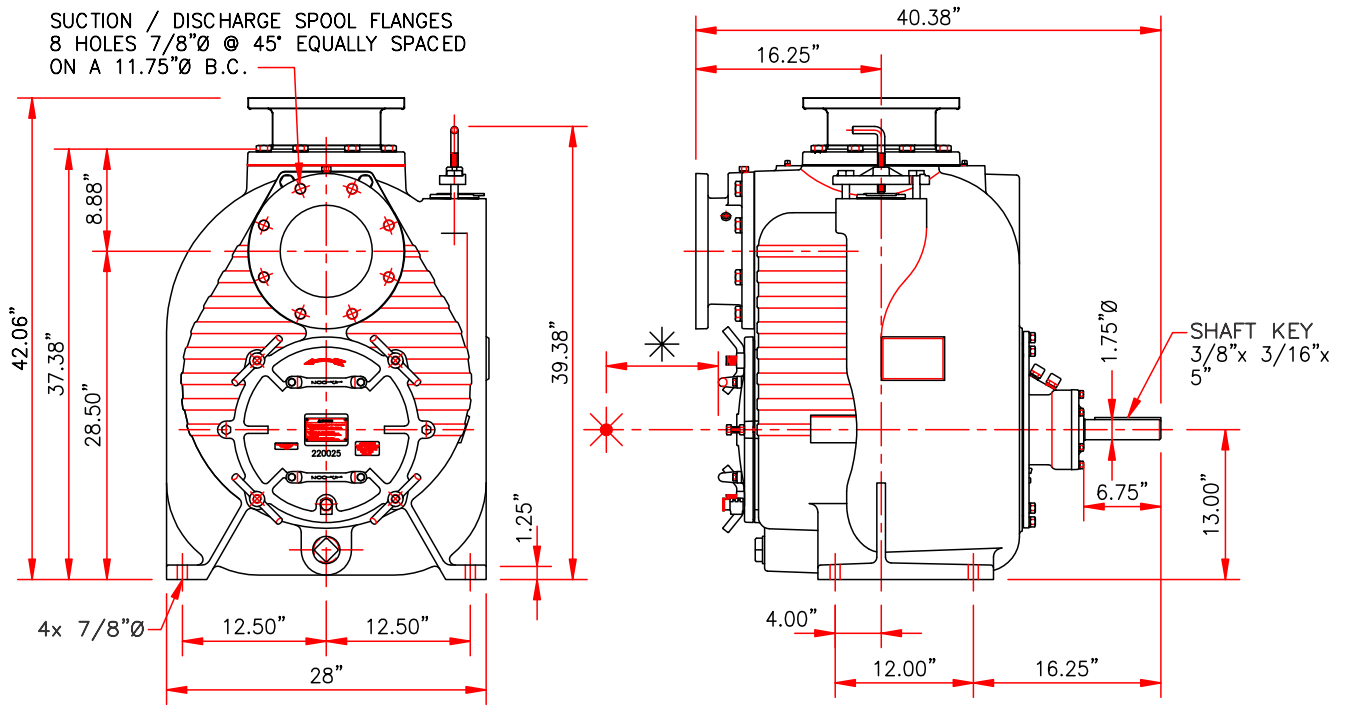
**PAINT**  
Air dry enamel, water based.

**PRESSURE RELIEF VALVE**  
Brass

**SEAL**  
*Design:* type 21, mechanical, oil lubricated, double floating, self aligning.  
*Material:* silicon carbide rotating and stationary faces, fluorocarbon elastomers (Viton® or equivalent). 316 stainless steel cage and spring.

**OPTIONAL EQUIPMENT**  
Flexible coupled assy, with base OSHA guard and electric motor.

SUCTION / DISCHARGE SPOOL FLANGES  
 8 HOLES 7/8"Ø @ 45° EQUALLY SPACED  
 ON A 11.75"Ø B.C.



\* 24" CLEARANCE RECOMMENDED  
 FOR MAINTENANCE. 13" MINIMUM.



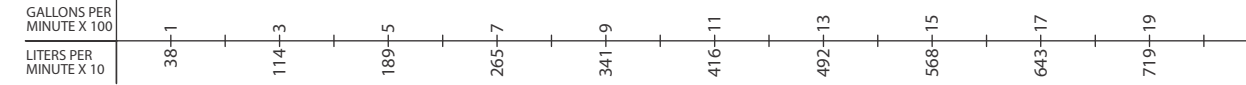
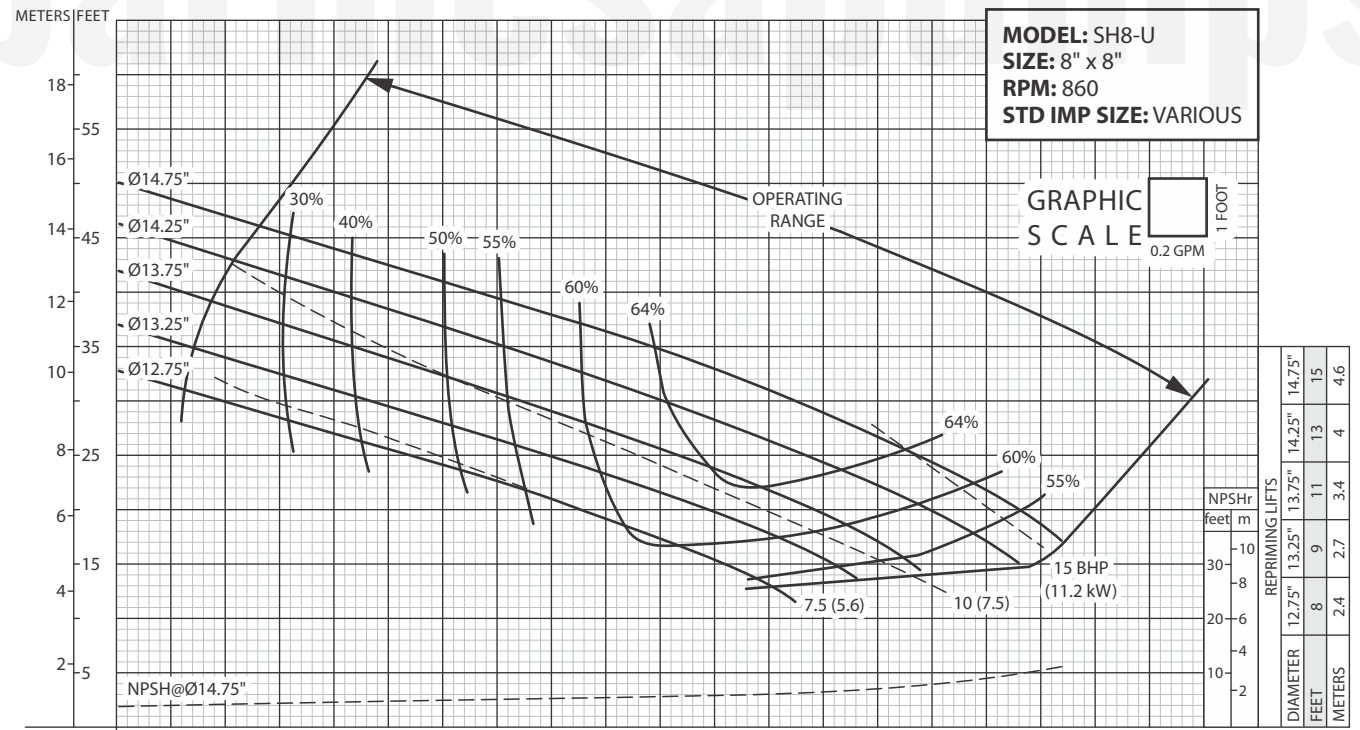
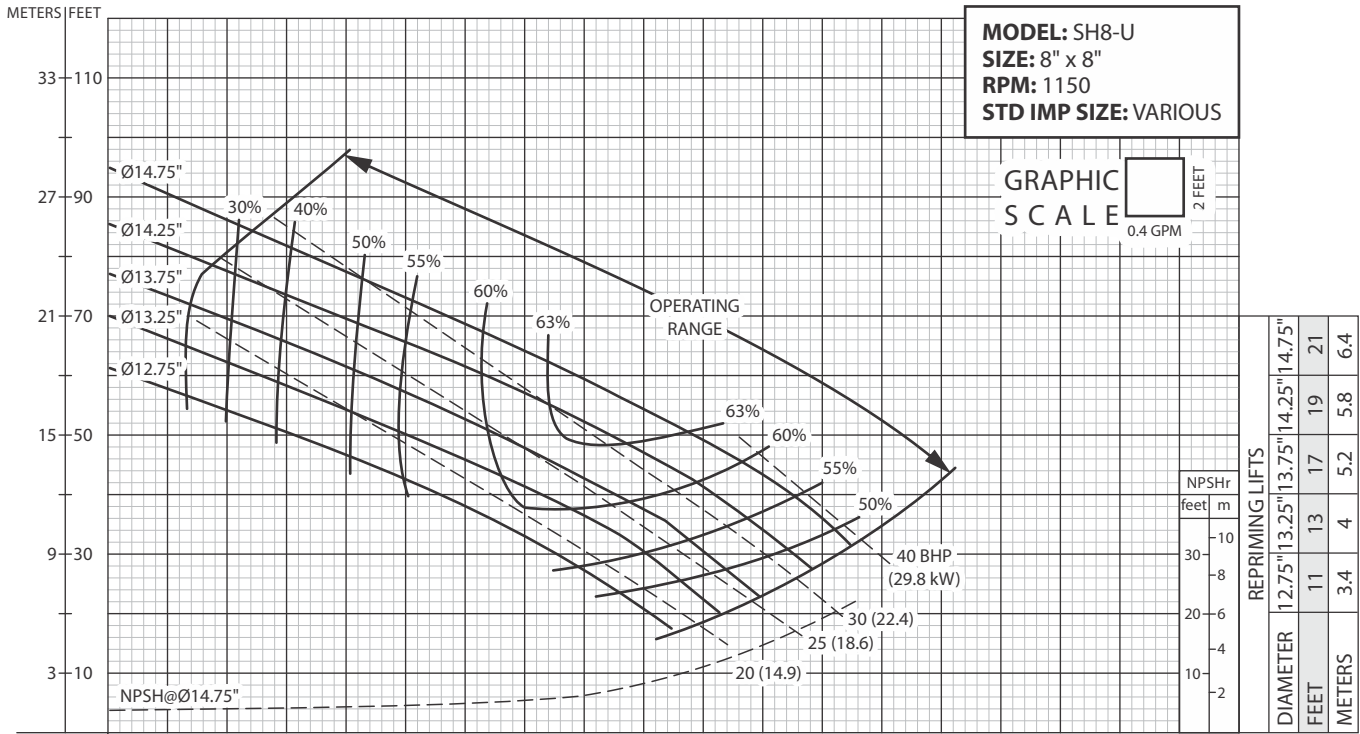
**IMPORTANT! - Do not use in explosive atmosphere or for pumping volatile flammable liquids.**

barmesapumps

**IMPORTANT!**

1. Never use this pump to handle explosive liquids.
2. This pump is not approved to be used in swimming pools, recreational installations or any application where human contact may be common.

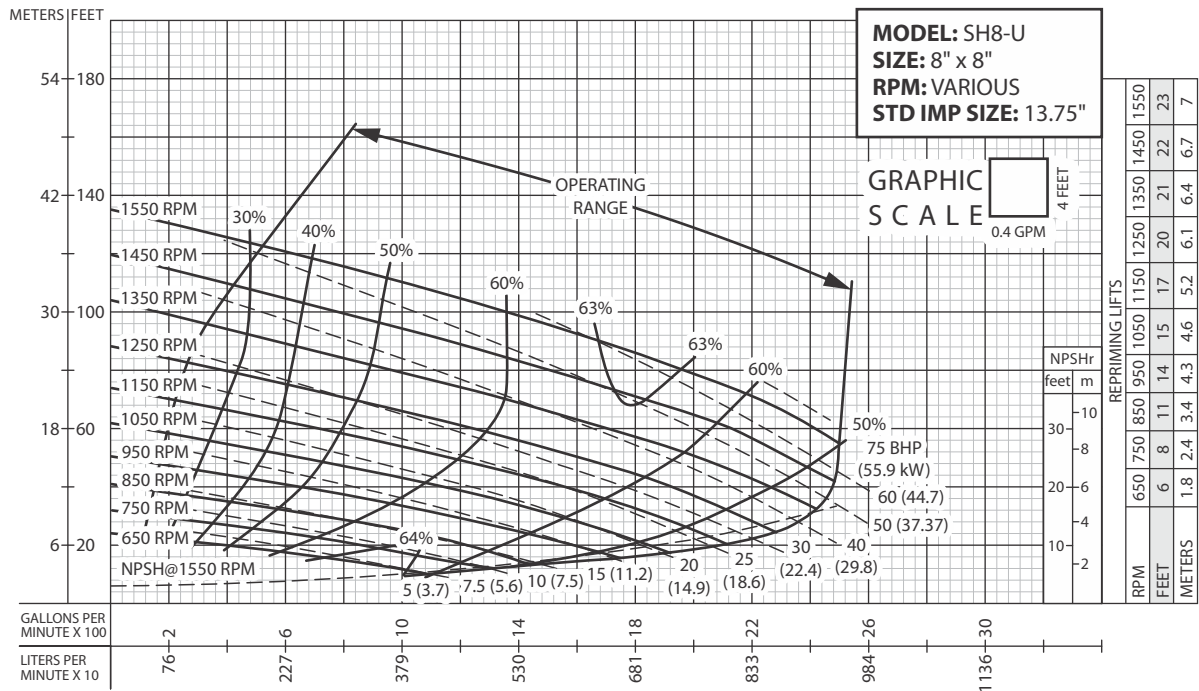
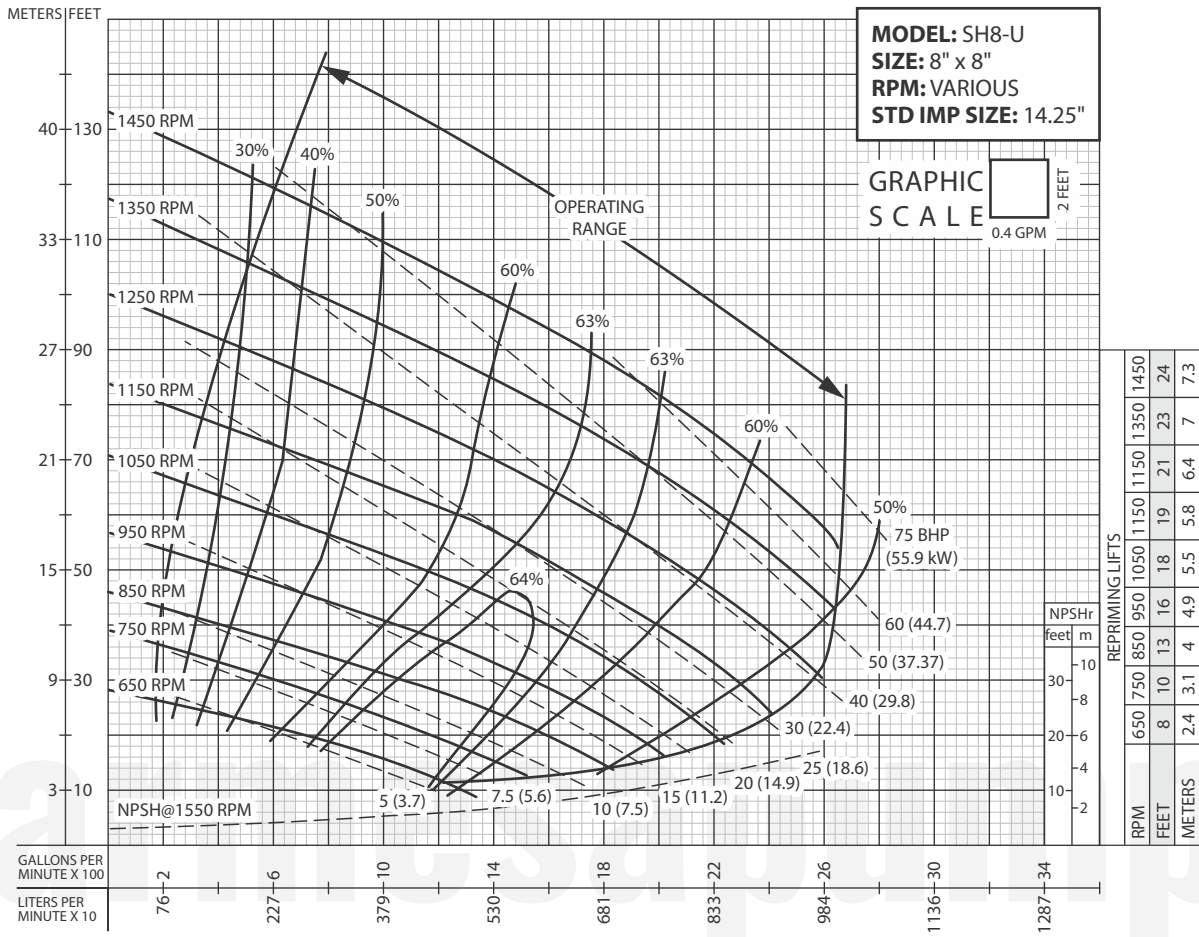
# PERFORMANCE CURVES



**IMPORTANT!**

1. Testing is performed with water specific gravity of 1.0 @ 68 °F (20 °C); other fluids may vary performance.

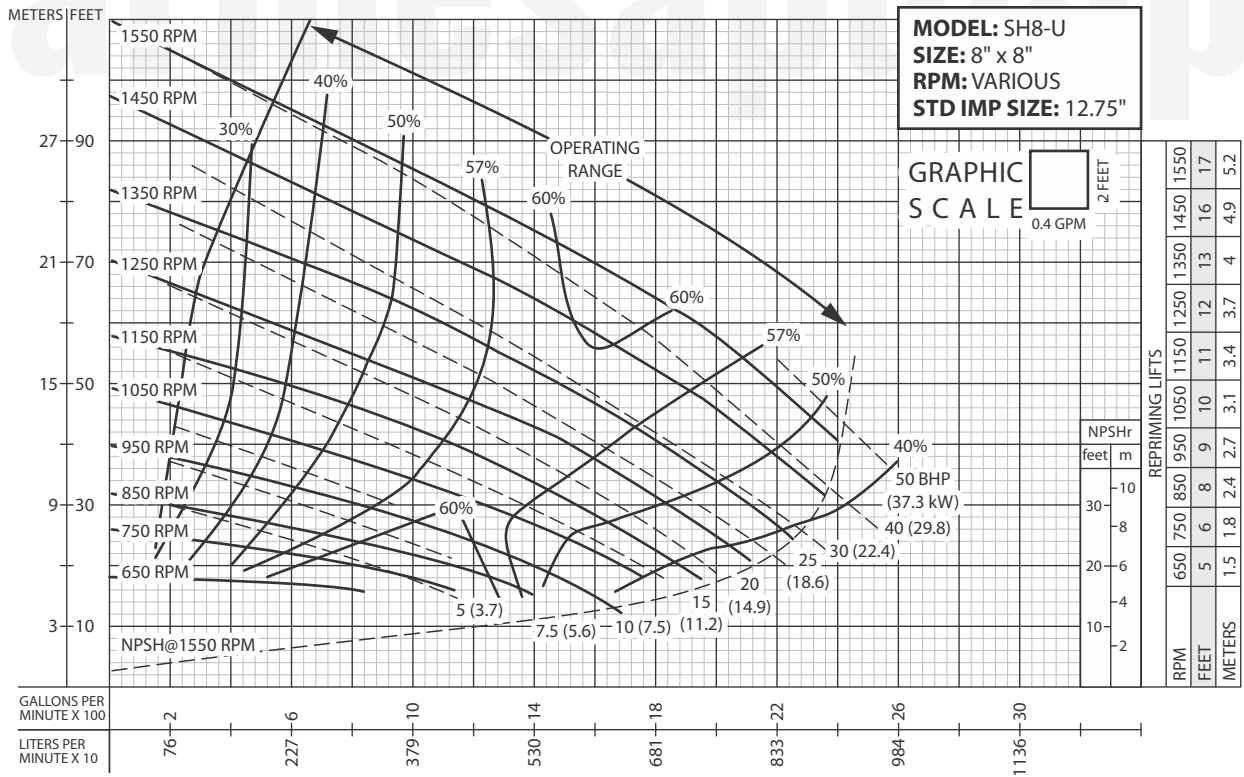
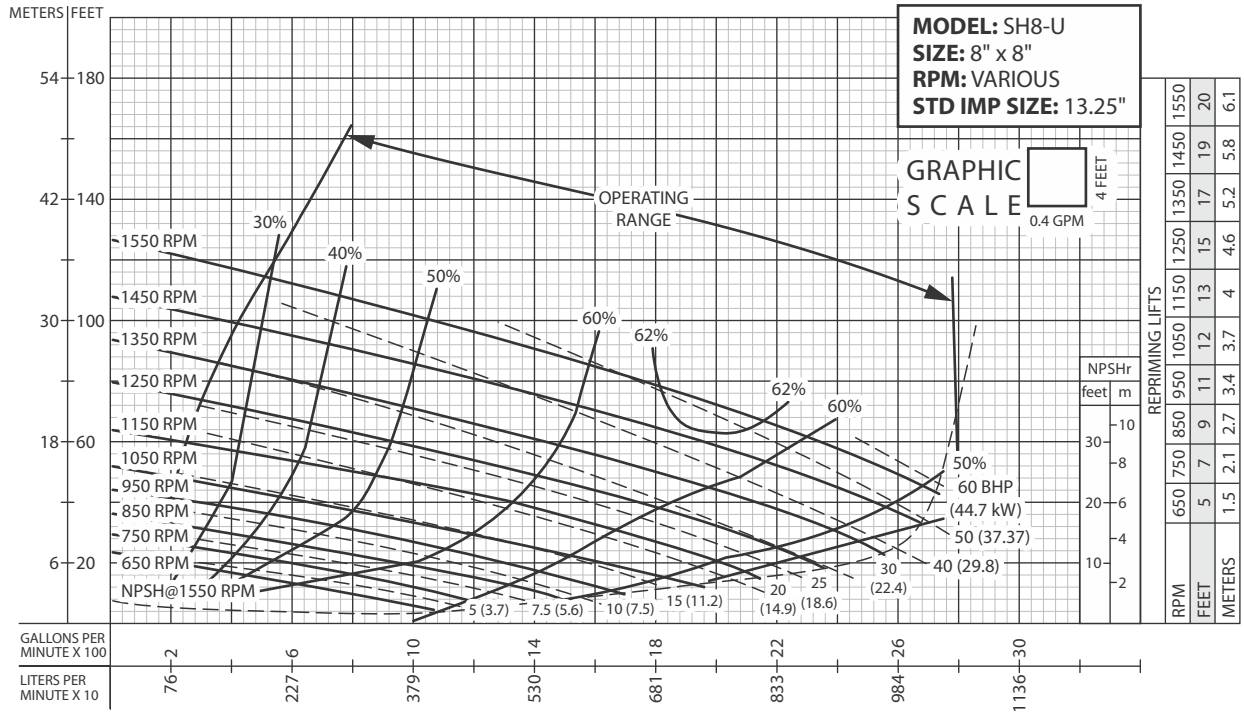
# PERFORMANCE CURVES



**IMPORTANT!**

1. Testing is performed with water specific gravity of 1.0 @ 68 °F (20 °C); other fluids may vary performance.

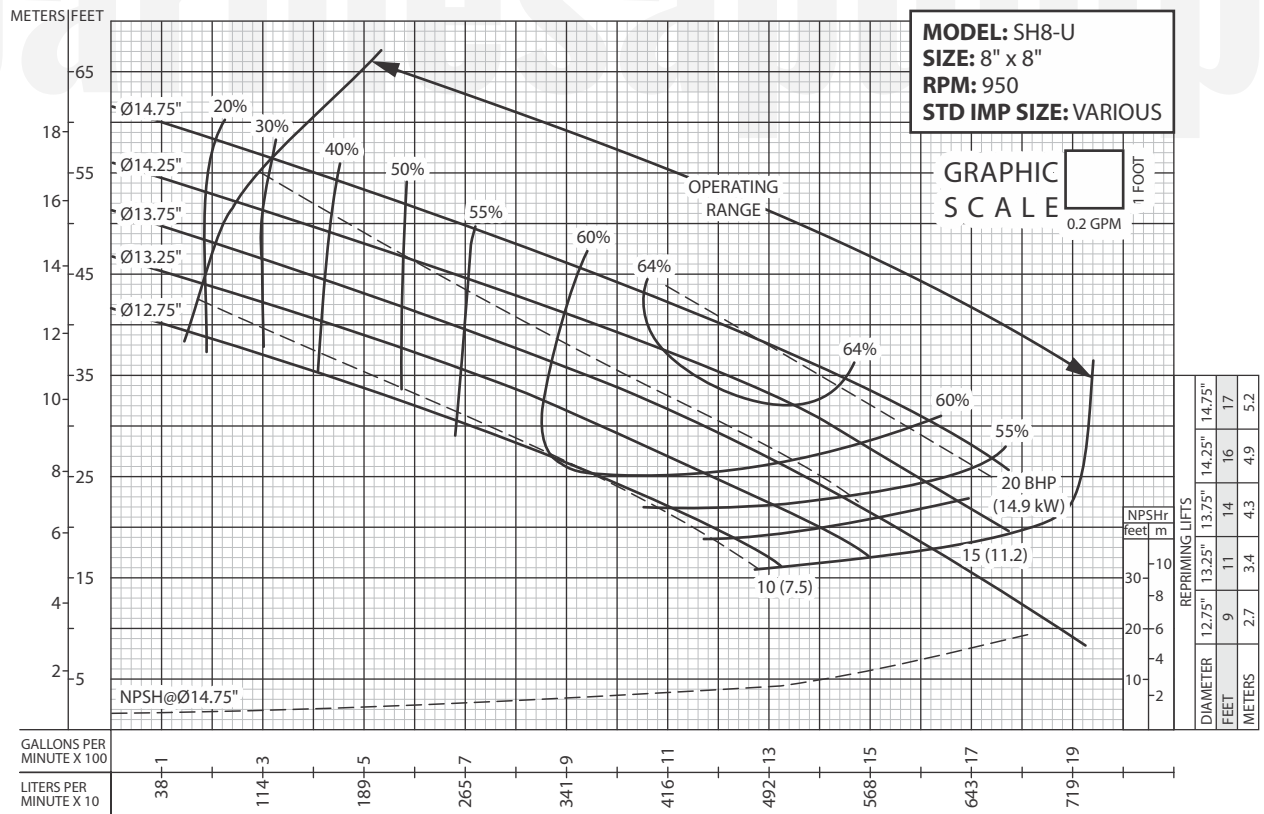
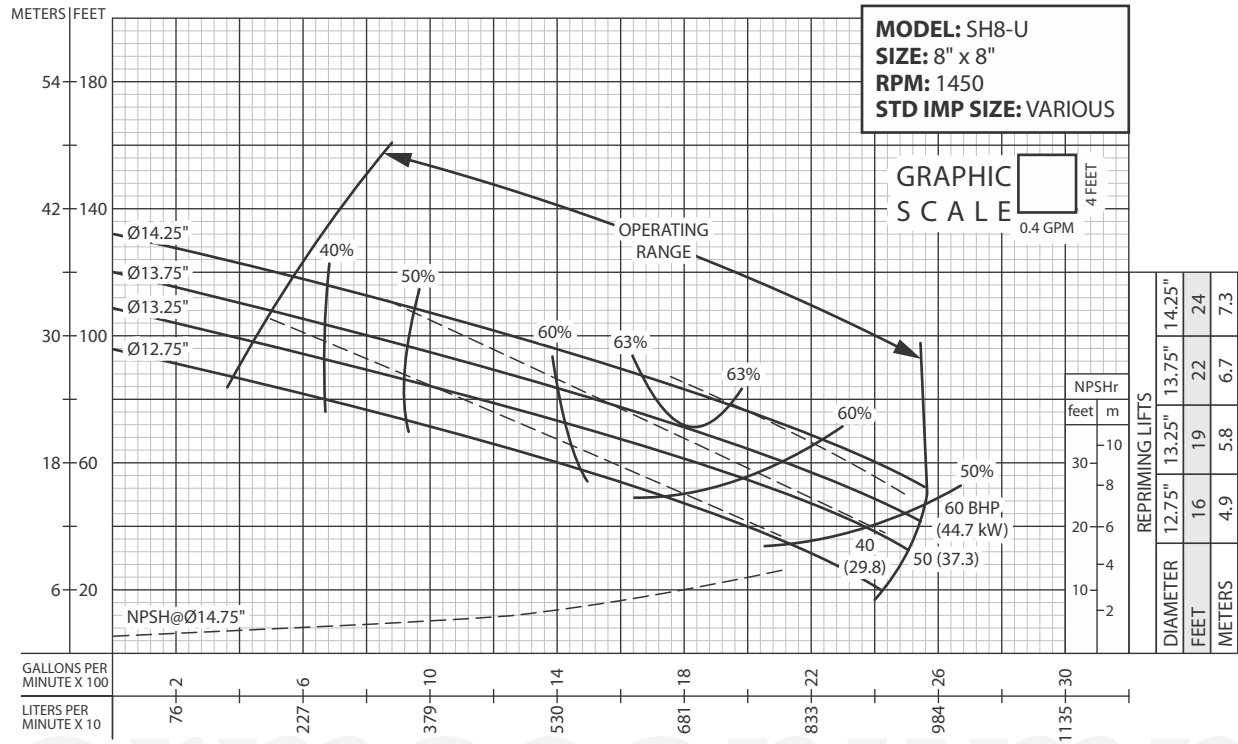
PERFORMANCE CURVES



**IMPORTANT!**

1. Testing is performed with water specific gravity of 1.0 @ 68°F (20°C); other fluids may vary performance.

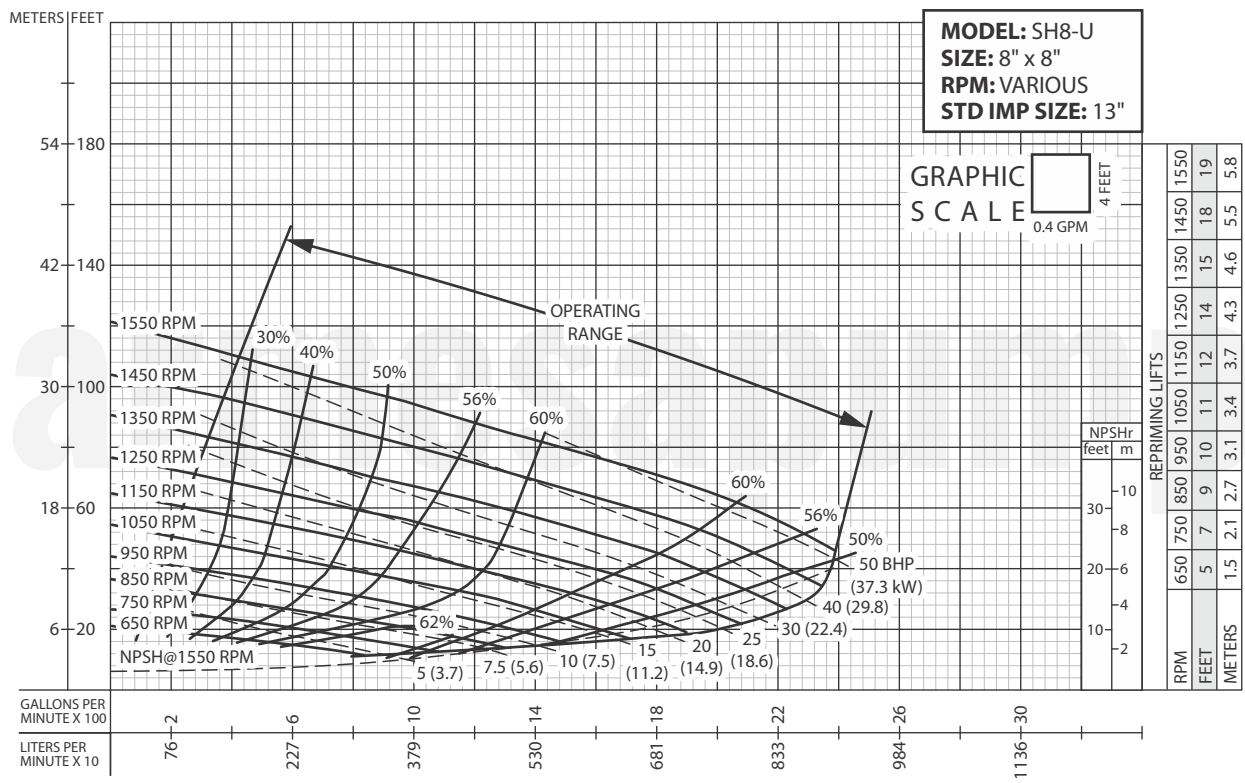
PERFORMANCE CURVES



**IMPORTANT!**

1. Testing is performed with water specific gravity of 1.0 @ 68 °F (20 °C); other fluids may vary performance.

# PERFORMANCE CURVES



**IMPORTANT!**

1. Testing is performed with water specific gravity of 1.0 @ 68°F (20°C); other fluids may vary performance.